

EDITION #114 MAY 2025

Inside

LIFESTYLE & INTERIORS



GNVPEL

Inside

EDITION #114



Inside this striking mountain retreat, Ward Young Architecture & Planning—led by principal architect Ted Brobst with team members Sudeep Vontary and Shab Mashhoon—has created a masterpiece of contemporary design. The ARETE Residence seamlessly blends limestone, glass, and timber in a sophisticated mountain modern style that connects interior spaces with the surrounding pine forest landscape.



Adam Potts

CAFÉ

DISTINCT BY DESIGN™



Café™ BELLISSIMO Semi Automatic Espresso Machine + Frother

WWW.CAFEAPPLIANCES.COM



VASTURE

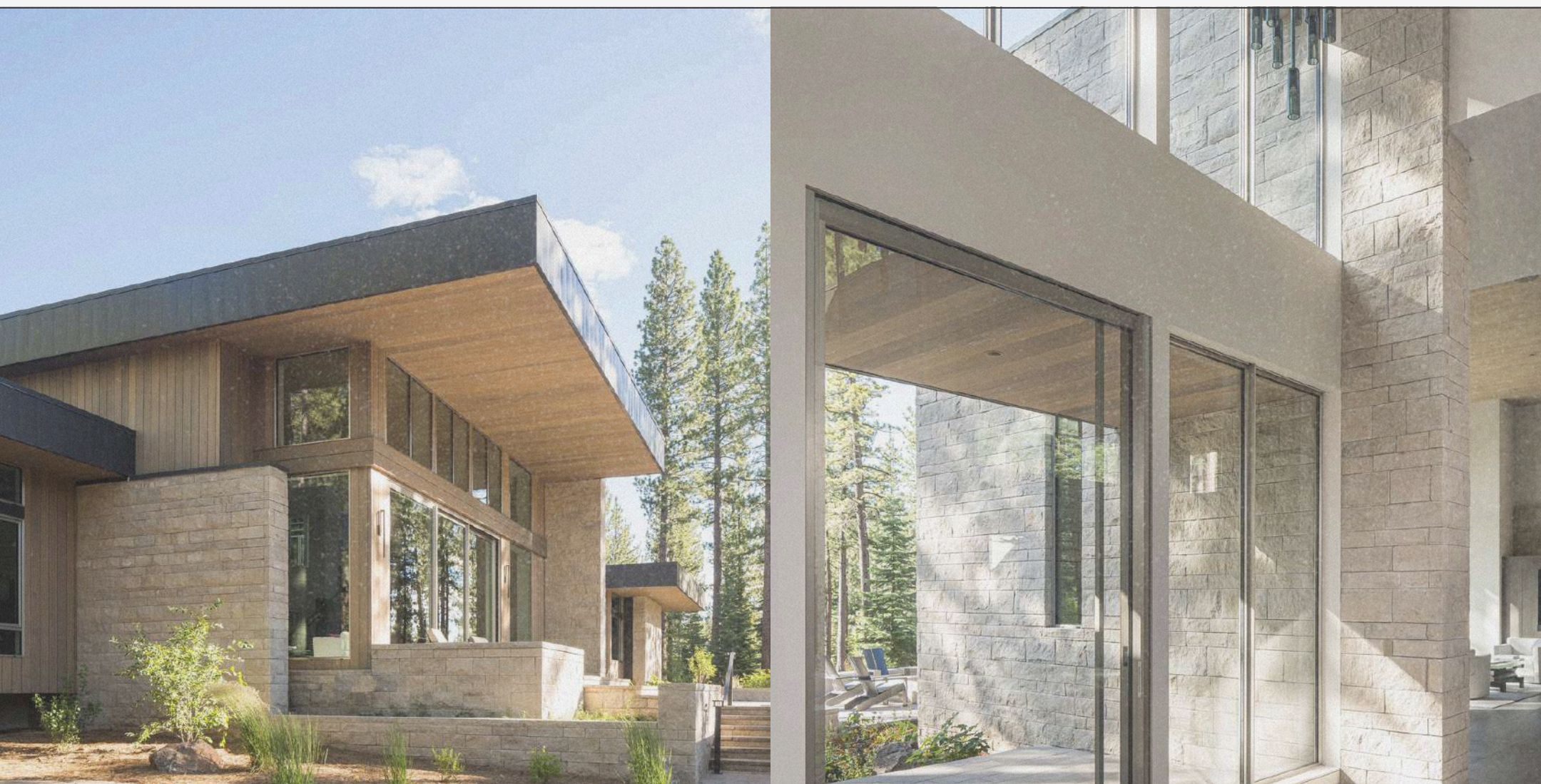
MINIMAL YET FULL—WHERE OPENNESS AND LIGHT FEEL INTENTIONAL

Space and light often have a thing where people try to maximize on the best way to enhance space using as much light flowing through a house without the home feeling empty. Transitional minimalism allows us to maintain post-modern themes while introducing soft elements of ultra-modernism, and in between is where the sweet spot is, creating a balance so that we don't end up with too much volume. I think this home certainly has that dialogue between space and light.

What struck me most was not just how the ARETE Residence holds space—but how it listens to it. The architecture doesn't rush to impress; it unfolds quietly. Planes of limestone, the discipline of form, and the restraint in palette all work together to create a calm that's not cold, and a geometry that feels human. There's a generosity to how the home opens to the forest, yet the interior never loses intimacy.

It's a lesson in intention—how less can be warmer, how silence in design can still speak. In a world filled with visual noise, this kind of clarity is rare, and deeply moving.

Lepang







The ARETE Residence expresses a quiet confidence through a refined material palette of limestone, glass, steel, and warm timber. Textured limestone walls lend visual rhythm, grounding both interior and exterior spaces. Underfoot, large-format grey porcelain tiles provide continuity, while wood-lined ceiling planes introduce natural warmth and scale. The colour scheme remains deliberately neutral—soft whites, greys, and natural wood—punctuated by matte black accents and occasional curated art pieces. Furnishings are sculptural yet restrained, favouring subtle forms and tactile fabrics. The result is a home rooted in curated minimalism, where each element is intentional, allowing the architecture and surrounding landscape to take centre stage.

SABLISSE

TEXTURED SAND TONES—TACTILE MINIMALISM AT ITS PUREST.



114/
MOODBOARD



SPACIAL

WITHIN THE FRAME

Among today's modern mountain homes, the ARETE Residence distinguishes itself through restraint, refinement, and a clear connection to its environment. Designed by Ward Young Architecture & Planning, this renovation reinterprets mountain modern design with a focus on material integrity, spatial clarity, and the seamless flow between architecture and nature.

Situated on a pine-filled site chosen for its natural beauty, the home engages the landscape without overwhelming it. Principal architect Ted Brobst, in collaboration with Sudeep Vontary and Shab Mashhoon, approached the project with both discipline and creativity. The result is a balanced composition of limestone, timber, and glass—materials that age gracefully and feel grounded in place.

Central to the home's design are a series of vertical limestone walls that run north to south. These textured planes establish rhythm, organize space, and provide contrast to the transparency of the glass. They appear both inside and out, allowing the architecture to move fluidly between interior and exterior without interruption.

The transition between indoors and outdoors is most striking in the main living area, where a wood-lined ceiling extends beyond glass walls to form deep overhangs. These overhangs shade the interiors from direct sun while framing serene forest views. The ceiling's warmth and scale are offset by clean structural steel elements, adding a subtle tension that enhances the architectural layering.

To realize these ambitions, Gabbart & Woods Engineering worked closely with the design team to develop a structure that could support the wide spans and floating rooflines. Their precise solutions allow the generous glazing and cantilevered planes to remain visually light while structurally sound in a demanding alpine climate.

Interior designer Vivian Soliemani approached the home with an appreciation for architectural clarity. Her selections—both in furniture and finishes—respect the architecture's tone and rhythm. In the kitchen, handle-less dark cabinetry creates a quiet backdrop for sculptural veined marble counters. Slender pendant lights above the island add refinement without distraction. Throughout the home, furnishings are thoughtful, modern, and understated—supporting rather than competing with the architecture.

The spatial experience unfolds gradually. From the moment one steps into the entry, where a cascade of pendant lights animates a double-height space, the home reveals itself in a series of transitions. Public and private areas are arranged in a fluid sequence, allowing for both openness and retreat.

Landscape design by Blide Landscape & Design strengthens the architectural intent. A limestone-edged terrace with a sleek fire feature extends the living area outdoors, creating a place of quiet gathering. Native grasses and trees are placed with care, echoing the natural woodland without becoming ornamental. Material choices throughout reflect a refined sensibility. Large-format porcelain tiles provide continuity underfoot and reflect light softly across surfaces. The use of timber—particularly in ceiling planes and select wall finishes—adds texture and warmth to the interior. In the bathrooms and kitchen, marble introduces visual movement while remaining understated and elegant.

Lighting is used strategically to support the architecture. Recessed fixtures offer ambient light without intrusion. Accent lighting highlights material transitions and important moments within the structure. Feature fixtures—such as the entry pendant and the slender light above the dining table—are elegant without being dominant, offering visual rhythm and sculptural presence.

The architectural dialogue between built form and natural landscape reaches a crescendo in the rear courtyard. Here, expansive glass doors slide open to dissolve the boundary between house and forest. The surrounding pines become part of the interior experience, visible from nearly every space within the home.

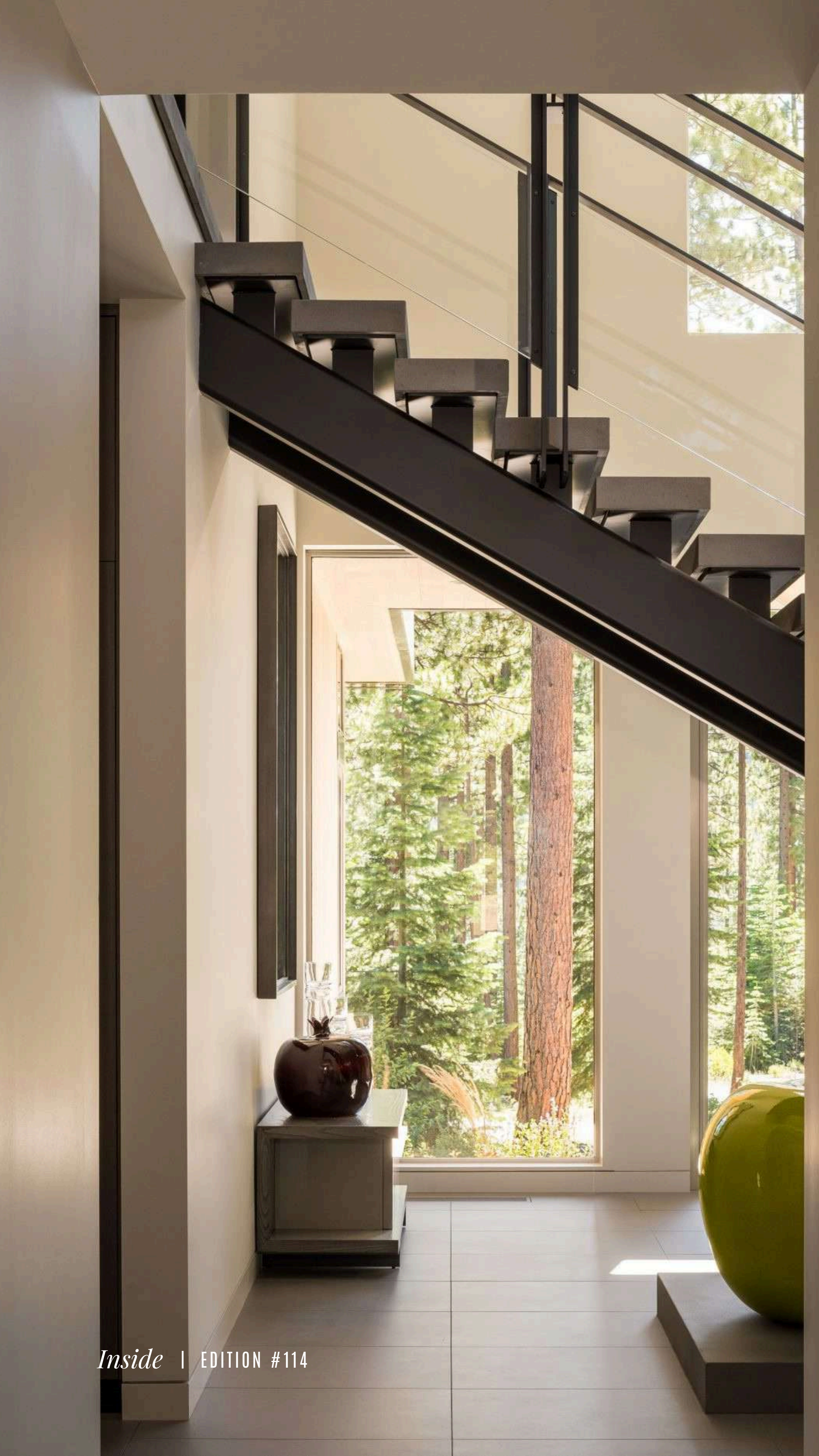
What sets the ARETE Residence apart is not a reliance on stylistic gestures, but rather its quiet confidence. This is a home that does not imitate its environment, nor does it try to control it. Instead, it creates a respectful frame through which to experience it. The architecture supports a lifestyle of reflection, connection, and ease.

Clean lines and carefully calibrated proportions lend the home a timeless quality. Its minimalism is not cold, but warm and deliberate—built from authentic materials that are allowed to speak for themselves. In this way, the ARETE Residence resists trend and embraces lasting design.

By allowing architecture and landscape to work in concert, Ward Young Architecture & Planning has created a home that feels deeply grounded without being heavy, modern without being aloof. It is a home designed to be lived in slowly, where discovery unfolds over time.

The ARETE Residence is more than a place to live—it is a way of seeing the land, light, and material with clarity and care. A modern retreat that invites you not only to inhabit space, but to be present within it.





Inside | EDITION #114



Inside | EDITION #114



Inside | EDITION #114



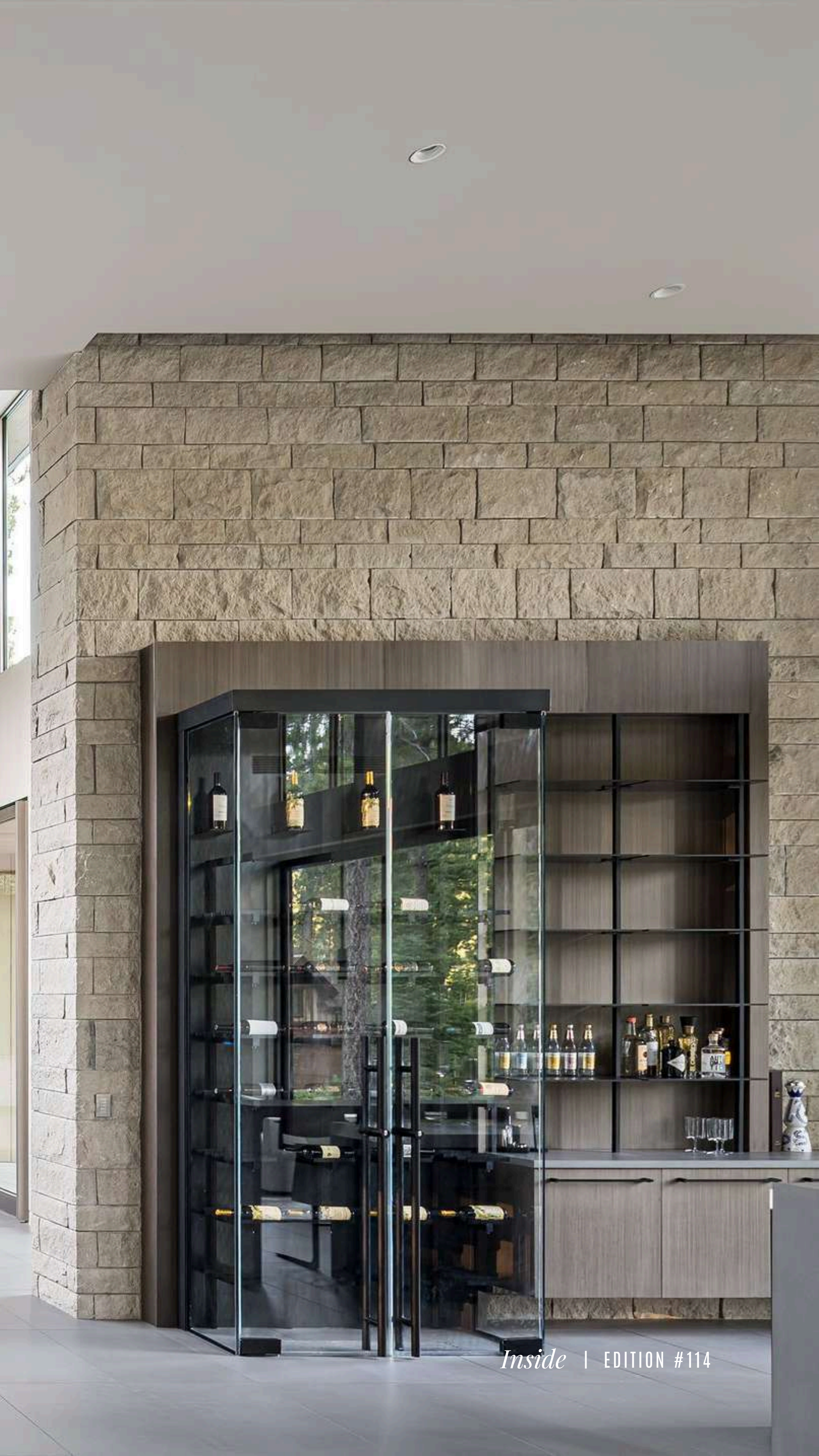












Inside | EDITION #114



Inside | EDITION #114





THE KITCHEN EDIT



In the kitchen, material integrity and spatial clarity come together in a composition that feels both functional and sculptural. Dark oak cabinetry, finished with integrated pulls, recedes quietly into the background, while a book-matched marble backsplash introduces organic movement and visual tension. The island, clad in the same veined marble, features a sculptural waterfall edge and generous overhang, inviting connection. Sleek, built-in appliances sit flush within the cabinetry, preserving the kitchen’s linearity. Above, a slender pendant in matte black steel hovers over the island, offering focused light with a refined presence. Open metal shelves replace upper cabinets, creating a sense of lightness and display. The material palette—timber, stone, and metal—mirrors the rest of the home, ensuring continuity without predictability. Here, every line is considered, every junction clean. The kitchen doesn’t announce itself, but instead unfolds with elegance, anchoring the living space while maintaining a sense of calm sophistication.

Cream-veined stone and glass—light made architectural.

CREVANE

















Inside | EDITION #114



Inside | EDITION #114



Inside | EDITION #114



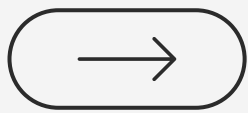


Inside

CATALOGUE

SHOP/BE INSPIRED/EDITION 114

LIVING STYLE



CAPRICE SOFA

Modern Sofa with sophisticated linear tufting style

DUNE STUDIO

Square Ottoman with Cove Tray Style in Walnut and COL by Troscan



Fairmont Park Montegut Wide Round Solid Colour Pouffe Ottoman



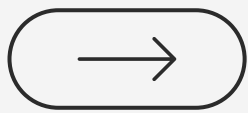
CAMDEN ARMCHAIR

Vintage-inspired wraparound armed armchair in fully upholstered frame and seating

MERMELADA ESTUDIO

LIVING

LOUNGE STYLE



COCOON MODE SECTIONAL

Soft seating modular seating in a modern fully upholstered style

LEPANG™



Modern Foosball Table made from oak and steel by District Eight.



The Alden side table that accommodates diverse work styles and spaces by KFI Studios



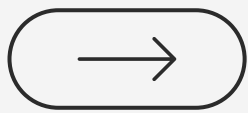
JACOB COFFEE TABLE

Contemporary round coffee table with unique tapered slate legs and metal accents

MINOTTI

LOUNGE

BAR STYLE



GRAM BAR CHAIR

Modern leather upholstered
back and seat, with steel
frame bar stools
DOMKAPA



Lambert & Fils glossy
oxblood Silo 2SC Pendant



Ash grey finished sideboard
cabinet by Holly Hunt

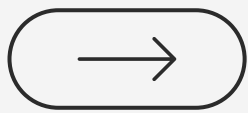


TADAO ISLAND TABLE

Concrete linear concept
island table with beautifully
curved legs
FORMA E CEMENTO

BAR

DINING STYLE

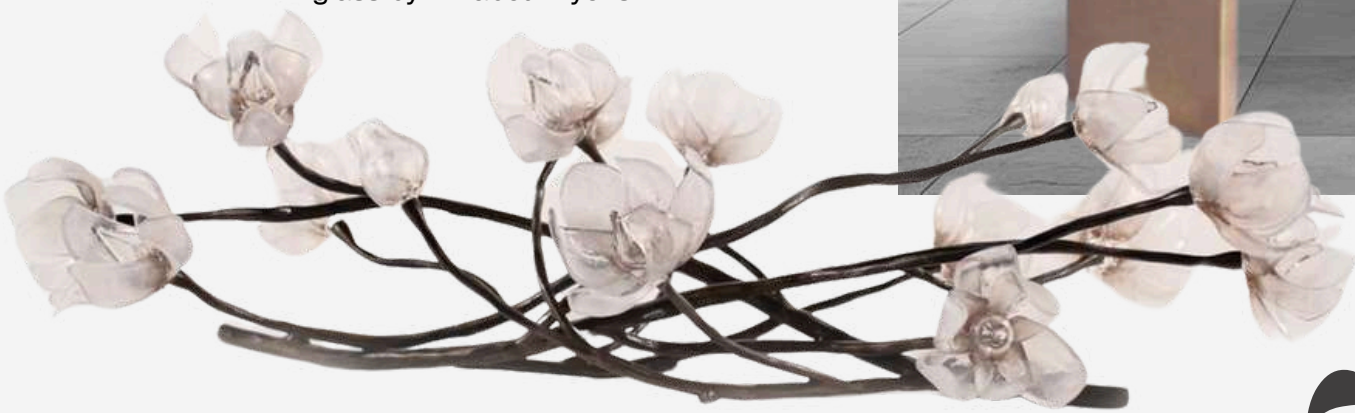


BENE DINING TABLE

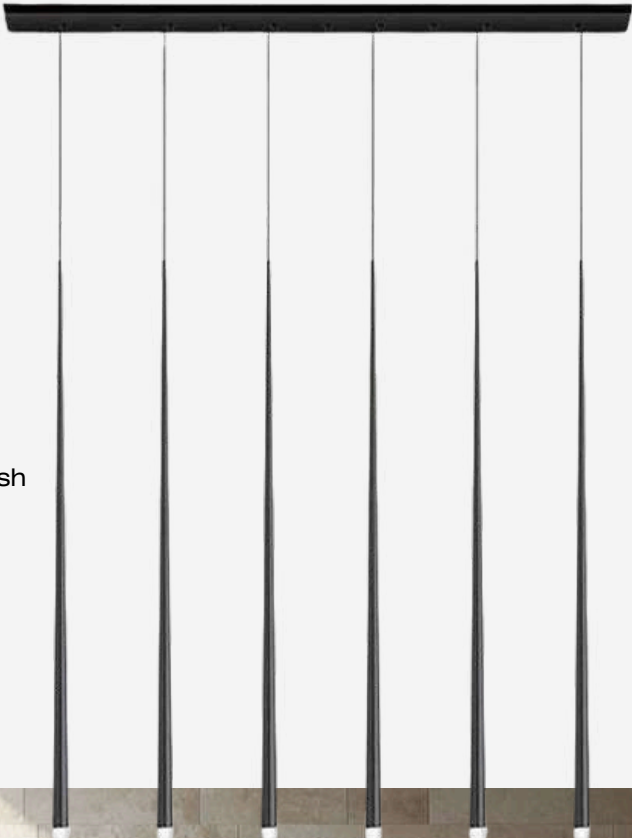
Black ebony finished hardwood table with bronze slate style legs

NOTA

Branching Magnolia table decor in bronze and blown glass by Elizabeth Lyons



Slender Cone Chandelier in black metal finish by Vakkerlight



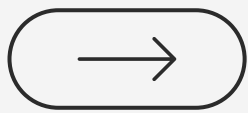
DINING

ENGLISH DINING CHAIR

Mart Stam English dining chair MG5 in red Bauhaus leather

MATTEO GRASSI

KITCHEN STYLE

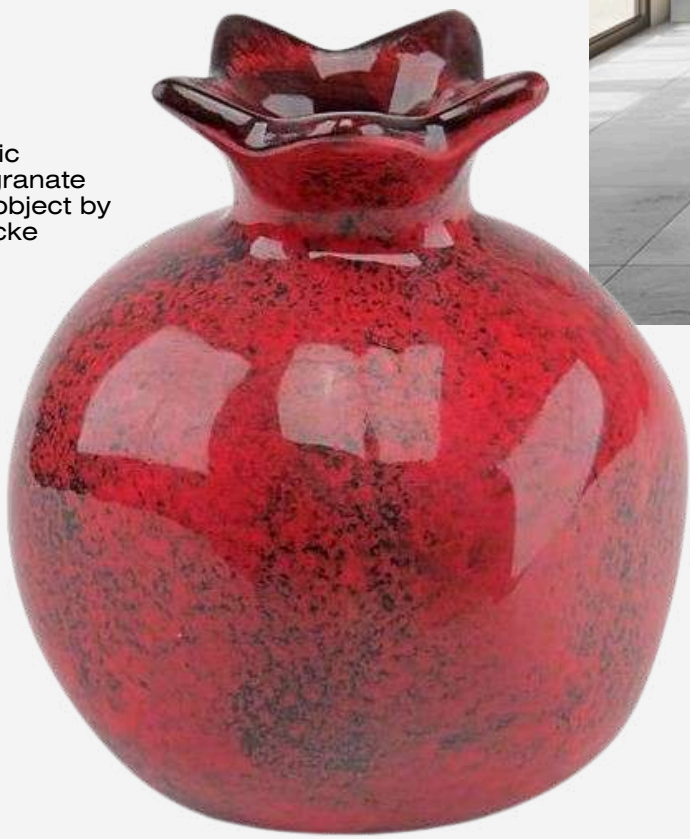


CAB BARSTOOL

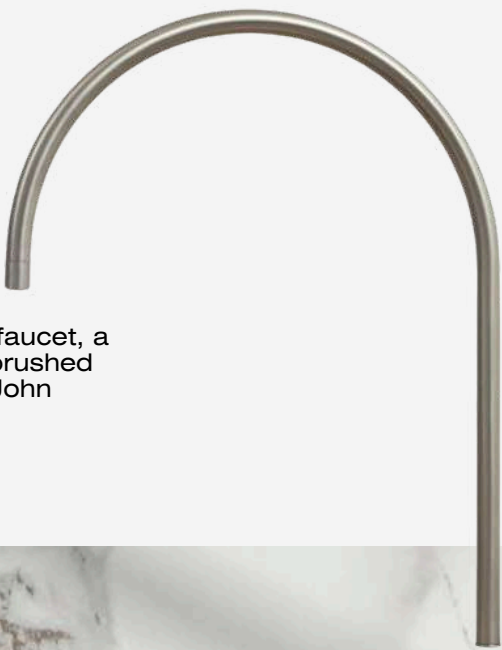
Modernist luxury leather bar stool originally designed in 1977 by Mario Bellini.

CASSINA

Ceramic Pomegranate decor object by Cabilocke



Obumex kitchen faucet, a graceful arched brushed chrome style by John Pawson



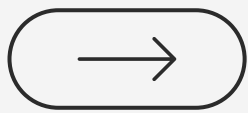
KITCHEN

CAFÉ™ HOOD

30” Smart Designer Wall Mount Hood w/ Perimeter Venting

CAFÉ™ APPLIANCES

BEDROOM STYLE



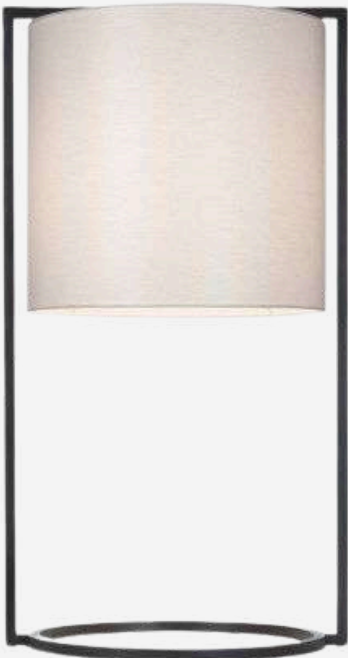
ANDERSON BED

Knoll Natural iron bed with high quality polyester covered headboard and frame bed

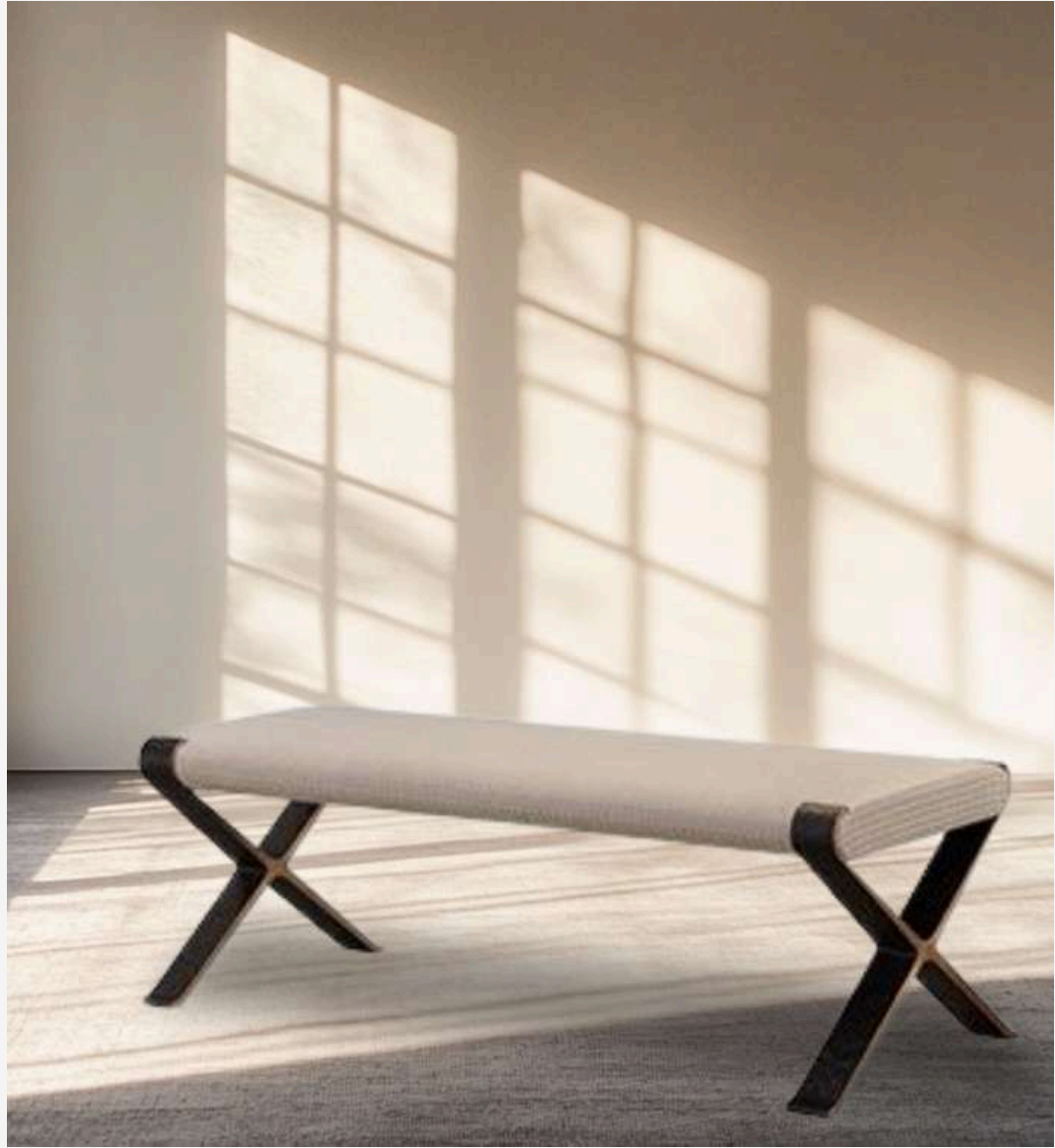
FOUR HANDS



Pattern Table Lamp with a circular base in a metal frame and silk shade by Kevin Reilly



Tod Von Solid blackened oak case nightstand with white matte drawer



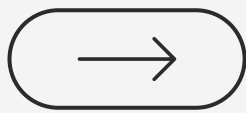
BEDROOM

VONA BENCH

Black finished bronze cross legs wrapped around sultry seating

JOSEPH JEUP

BATHROOM STYLE



CAROMA LIANO BATHTUB

Sharp lines and square architectural styled stone bath

BLUE SPACE



Verso S black metal towel stand by Aquanova



Polished Nickel Integrated LED Incandescent sconce by Holly Hunt



BATHROOM

LIA VANITY

Dark oak finished vanity with white marble top

MIRANO BATH & SPA

/INSIDE MODE



SETTO

A design punctuation mark that settles a room's flow.

Modern lounge armchairs are no longer just about function—they anchor a room with form, presence, and quiet confidence. From deep, low-slung silhouettes to sculptural curves and tailored lines, today's designs bring both comfort and character. Whether in earthy neutrals, bold tones, or richly textured fabrics, a well-chosen armchair can shift the entire mood of a space. It can soften a corner, frame a conversation, or offer a grounded counterpoint to airy interiors. Think generous proportions, sturdy construction, and a style that speaks—subtle or statement-making. In any room, the right armchair doesn't just sit; it sets the tone.



THE OUTDOOR EDIT



The outdoor spaces extend the home’s architectural language into the landscape with subtle gestures and a deliberate touch. A limestone-edged terrace creates a platform for gathering, centered around a low-profile fire feature filled with crushed glass—a quiet focal point that glows after dusk. The neutral hardscape is softened by indigenous grasses that move with the breeze, blurring the line between designed and natural. Deep red Adirondack chairs, carefully chosen for contrast and comfort, offer sculptural punctuation without disrupting the muted palette. Lighting is discreet and purposeful, casting soft washes across stone walls and guiding movement along pathways. Large concrete pavers step lightly through garden beds, bridging formal architecture and organic terrain. Materials echo those found inside—limestone, timber, steel—establishing continuity and calm. With each element, the landscape honours the natural topography while enhancing livability. It is not decoration, but dialogue—a space where nature and architecture share a considered and balanced conversation.

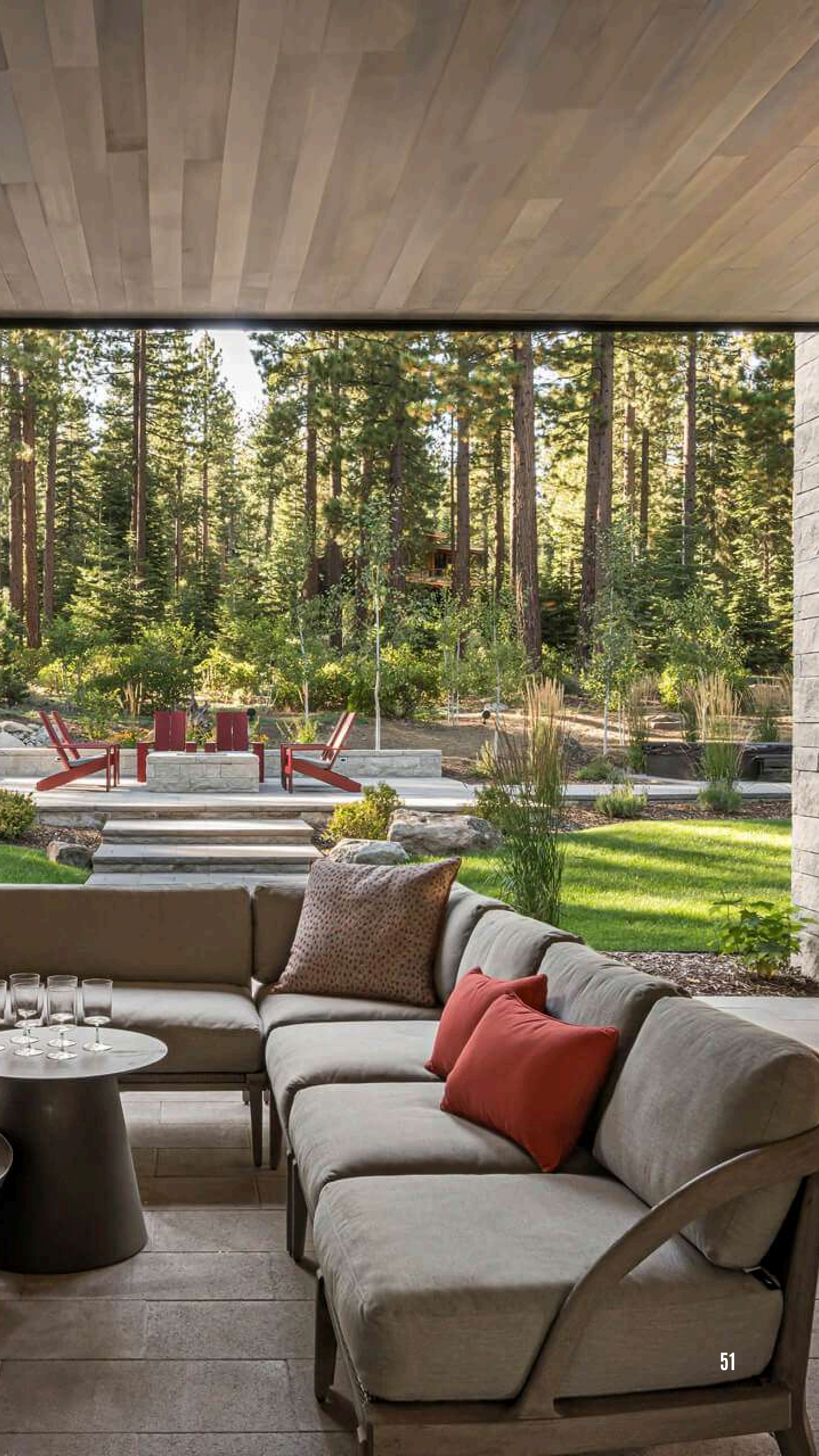
Stone as seduction — textured, tactile, and invitingly cool.

STONELURE



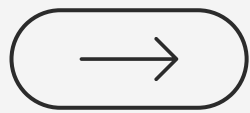








OUTDOOR STYLE



ANDORRA SECTIONAL

Weathered Grey Wood 3-Piece L-Shaped Outdoor Sectional Sofa with Sand Cushions
WEST ELM



MAX side table by
Christophe Delcourt in
a brushed bronze
structure



Round shaped organic
fibreglass Champagne
Bowl by Casa Sol

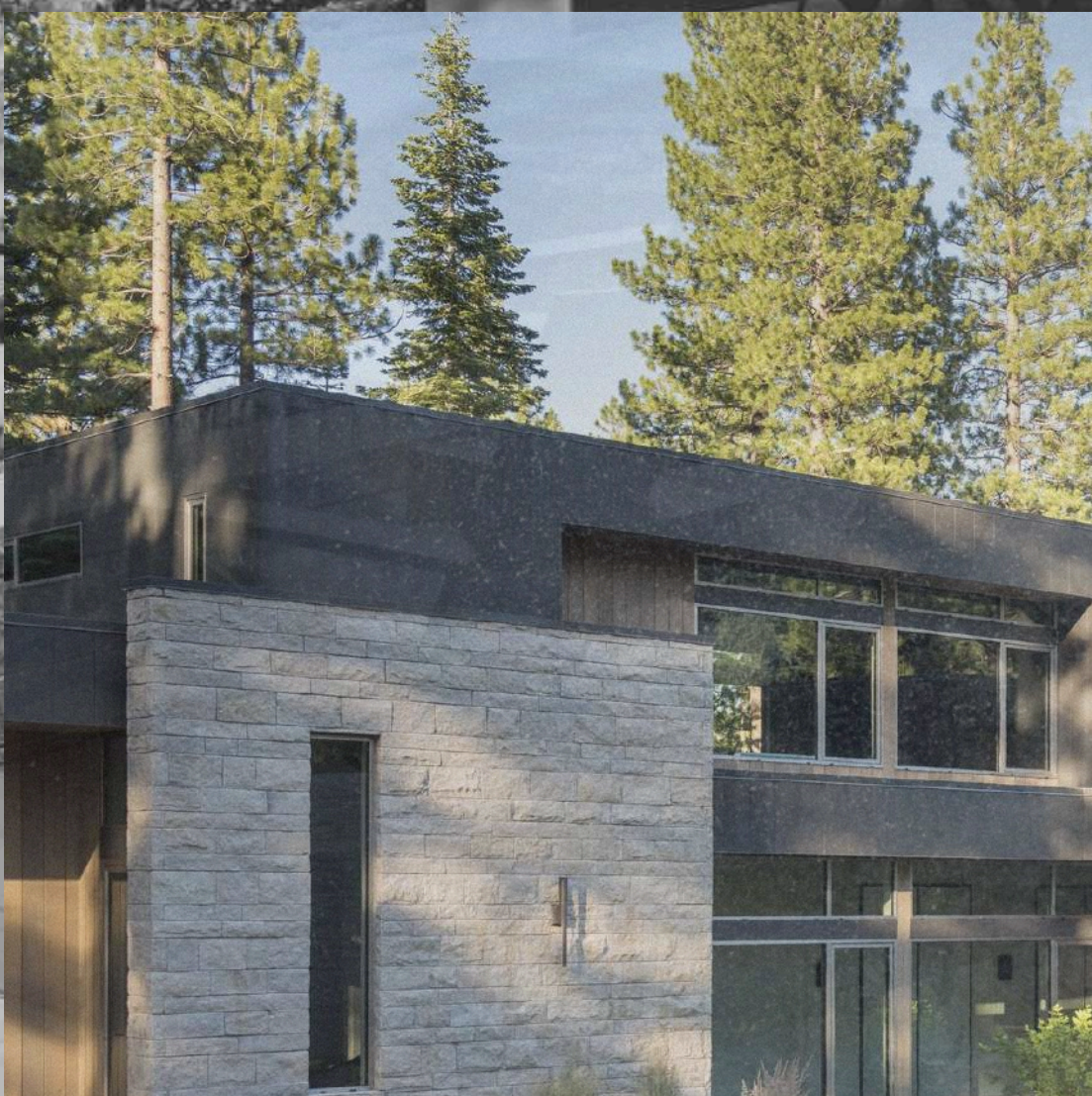


OUTDOOR

CONRAN CHAIR

Adirondack chair made from
oak-veneered marine
plywood in a red hue

GLASSETTE





Inside | EDITION #114







LEPANG

LUXURY INTERIORS

SETTING THE STANDARD



RESIDENTIAL | HOSPITALITY | COMMERCIAL

www.lepangluxury.com

T H E
D R E A M
S O F A

cocoon



*LUXE
LIVING*

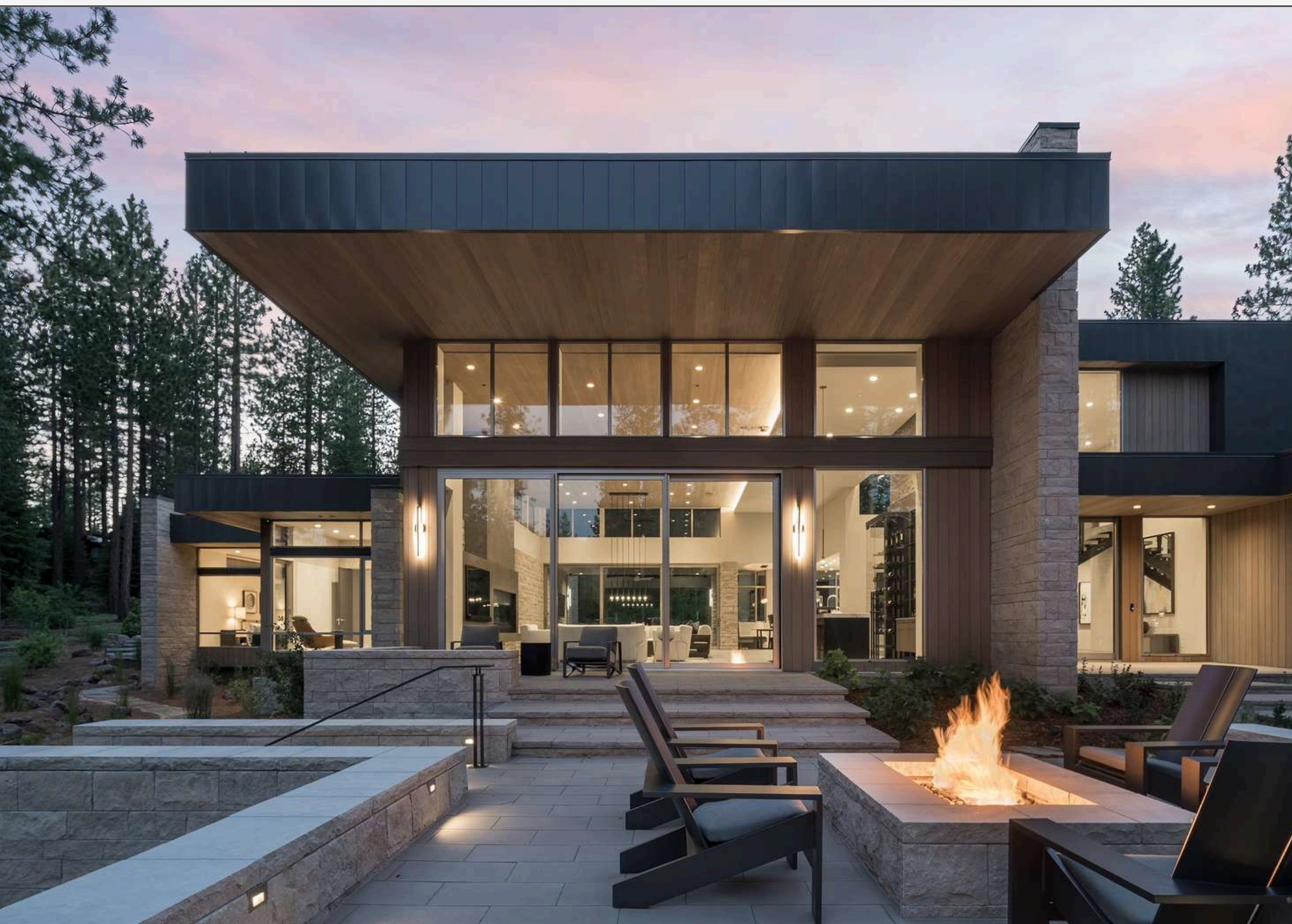
@ L E P A N G L U X U R Y I N T E R I O R S

INSIDEINTERIORMAGAZINE.COM

WE ARE
REDEFINING
LUXURY LIVING
*through interiors and
architecture*

Design is a canvas, and the brush is in our hands. Every choice, every stroke shapes the direction, breathing life into spaces and products that tell a story. This is what inspires me—to create with intention, to craft environments that feel alive. For design communities worldwide, this is more than work; it's our shared narrative.

LEPANG FERGUSON





REDEFINING LUXURY LIVING

WWW.INSIDEINTERIORSMAGAZINE.COM