

EDITION #103 FEBRUARY 2025

Inside

LIFESTYLE & INTERIORS



GNAPLE

Inside

EDITION #103



Inside The Perch Residence, a hilltop retreat overlooking Lake Washington, a collaboration between NB Design Group, DLH, Inc., and McClellan | Tellone unfolds. Floor-to-ceiling glass walls blur indoor-outdoor boundaries, while warm oak, hemlock wood, and marble create modern elegance. Balancing luxury and livability, this home is both a striking entertainer's haven and a serene sanctuary.



Patrick Barta

C A F É

D I S T I N C T B Y D E S I G N TM



Café™ BELLISSIMO Semi Automatic Espresso Machine + Frother

WWW.CAFEAPPLIANCES.COM

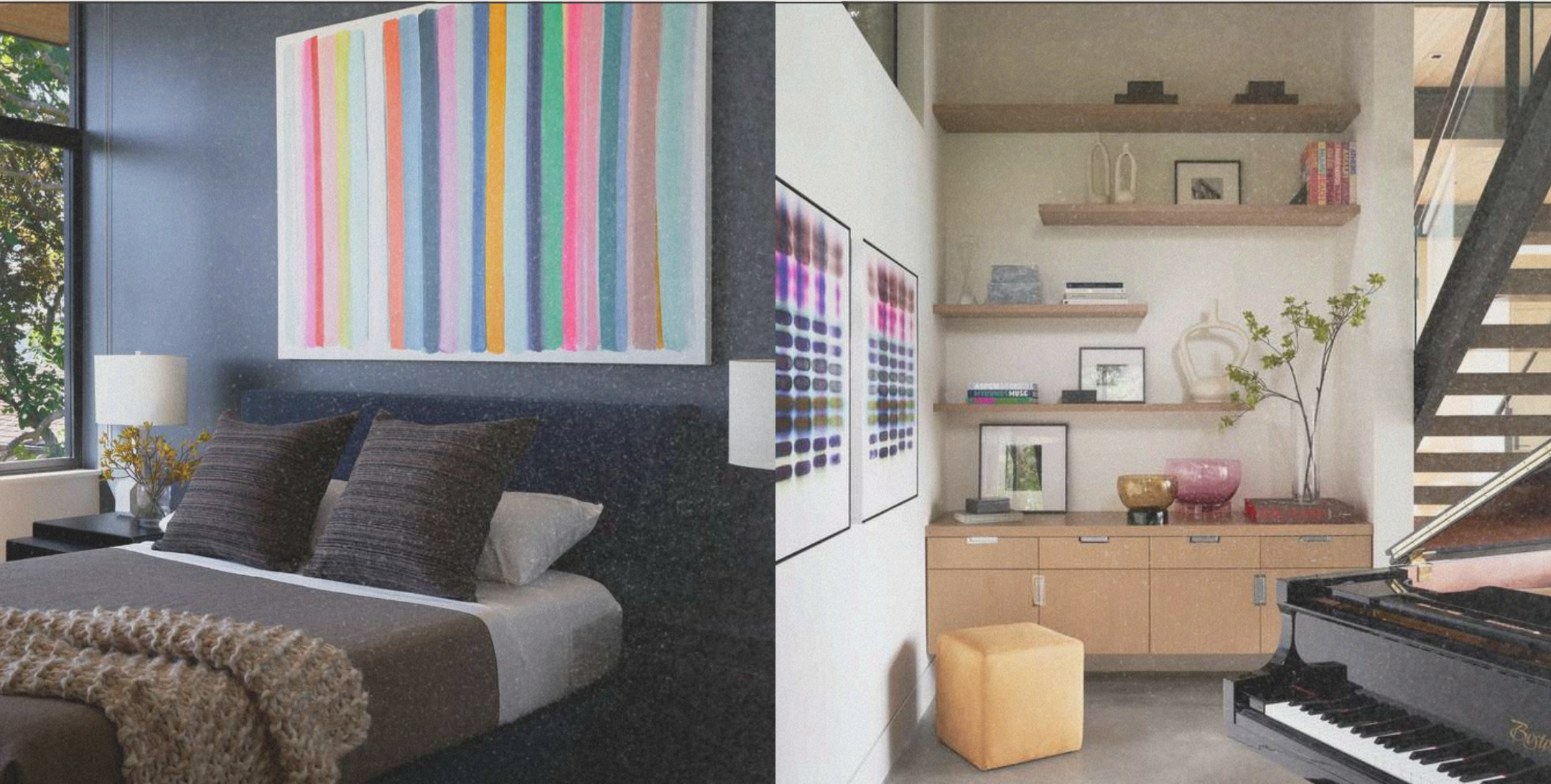


IRONÉ

A SLEEK, GLOBAL TWIST ON INDUSTRIAL CHIC AND UNDERSTATED OPULENCE.

Here's a refined editor’s note in the same tone and extended to 130 words:
Hilltop homes hold a distinct advantage—not just in their sweeping views but in how they engage with space from every angle. Elevated yet grounded, they dissolve boundaries between architecture and nature, creating a seamless dialogue with their surroundings. I find myself drawn to this approach, particularly when interiors embrace a vivid mid-century aesthetic infused with the warmth of farmhouse and countryside influences. It’s a balance of refinement and ease, where modernity meets nostalgia in the most effortless way.
The beauty of architecture lies in its boundless possibilities. When the foundation is built on comfort, safety, and fluidity, everything else naturally falls into place. A home should feel like an extension of its landscape—both a retreat and an experience, where design doesn’t just serve but elevates the way we live.

Lepang











HEMLOCK & MARBLE



Drawing inspiration from the dialogue between robust hemlock timber and ethereal marble veining, this sophisticated residence harmonizes organic warmth with geometric precision. The kitchen orchestrates this interplay masterfully - honey-toned oak cabinetry rises to meet hemlock-clad ceilings, while dramatically veined white marble cascades down the waterfall island. Chrome pendant lighting and brushed steel accents add contemporary punctuation, while polished concrete floors ground the space in industrial elegance.

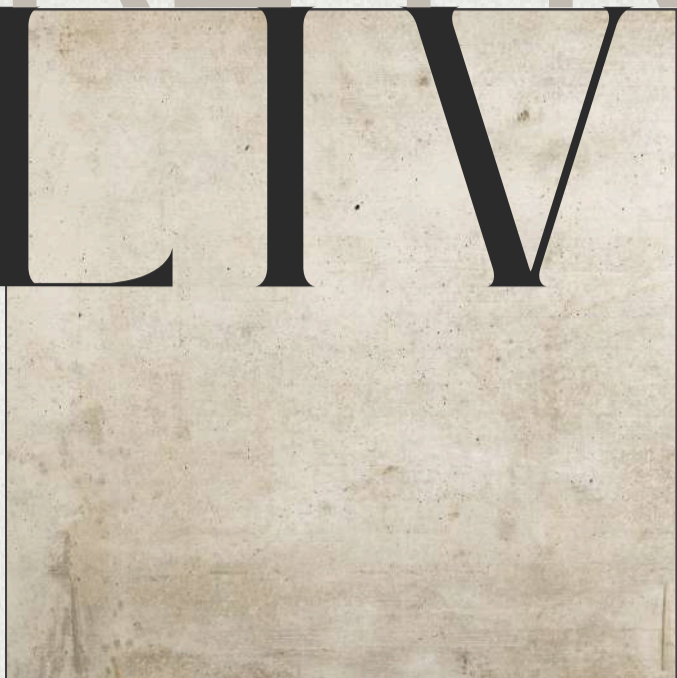
The exterior spaces echo this material conversation through thoughtfully composed layers. Concrete pathways weave through curated vegetation, while weathered timber screens and pure white outdoor furniture create deliberate contrast. Strategic lighting transforms these spaces after sunset, celebrating the architectural dialogue between organic and refined elements.

MID-C



MATERIALS
OGUE.

NATURE-FRAMED LIVING



Beautifully positioned above Lake Washington in Seattle's eastern reaches, the Perch Residence stands as a masterful exhibition of Pacific Northwest modern architecture. This striking contemporary home brought to life through the collaborative genius of McClellan | Tellone Architecture and NB Design Group, demonstrates how thoughtful design can transform a challenging topographical site into an architectural triumph.

The award-winning McClellan | Tellone, known for its sophisticated integration of built and natural environments, has crafted a residence that floats among the towering evergreens. Principal architect Regan McClellan, alongside Joey Pasquinelli and Laura Taheny, approached the steeply graded site as an opportunity rather than an obstacle, creating a multi-level dwelling that cascades down the hillside while maintaining intimate connections with its surroundings.

The home's exterior is a study in material harmony, featuring weathered Accoya wood cladding, blackened steel structural elements, and expansive glazing. The architects' decision to utilize a monotone palette allows the structure to stand out and blend in with its verdant backdrop. A green roof system further integrates the building with the landscape, while providing sustainable benefits and creating an additional visual plane when viewed from the primary suite above.

Inside, the 4,500-square-foot residence reveals a masterclass in spatial flow. The main level, executed in collaboration with NB Design Group, showcases an open-concept plan that dissolves the boundaries between interior and exterior spaces. Floor-to-ceiling aluminum-framed windows and sliding glass doors frame spectacular views of Lake Washington and the Cascade Mountains beyond while allowing natural light to flood the living spaces.

The material palette is refined yet warm, featuring white oak floors, hemlock wood ceilings, and dramatic marble surfaces. In the kitchen, custom-designed pale oak cabinetry pairs with white marble countertops and backsplashes, while sophisticated pendant lighting adds contemporary flair. The adjacent dining area is anchored by a sculptural branching chandelier, its organic form echoing the surrounding tree canopy.

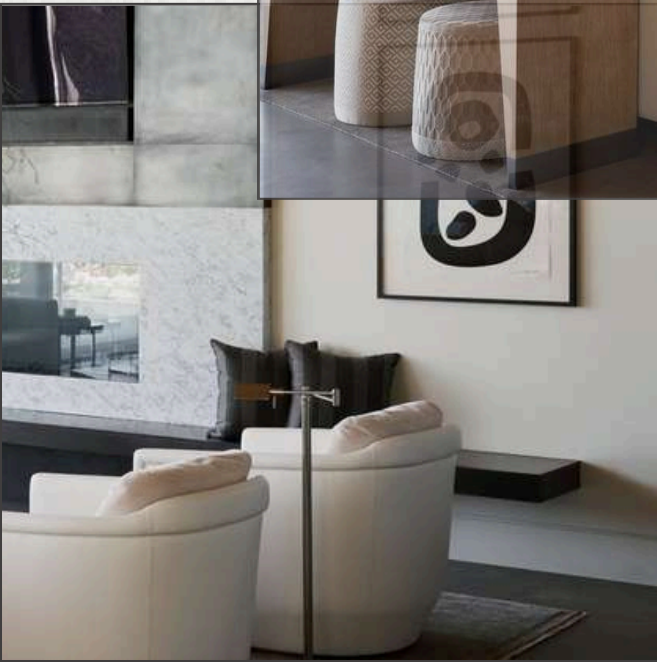
The living room epitomizes modern luxury with its floating marble fireplace surround, custom white upholstery, and carefully curated modern art pieces. Mushroom-shaped table lamps add whimsy to the otherwise architectural space while floor-to-ceiling windows invite the landscape to serve as a living backdrop.

DLH, Inc., known for its meticulous attention to detail, brought its considerable expertise to the project's execution. Their craftsmanship is evident in every joint and finish, from the precise steelwork to the seamless integration of the home's sophisticated mechanical systems.

The landscape design, also by McClellan | Tellone, creates a series of outdoor rooms that cascade down the hillside. Native plantings of lavender, ornamental grasses, and drought-resistant perennials provide year-round interest while requiring minimal maintenance. Concrete paths and steps, punctuated by LED lighting, create a dramatic approach to the home while ensuring safe navigation of the steep site.

Perhaps most impressive is how the Perch Residence achieves a delicate balance between being an entertainment showcase and a comfortable family home. Despite its architectural bravado, the space remains inherently livable, with thoughtful touches like a professional-grade kitchen, multiple outdoor gathering spaces, and intimate seating areas that encourage conversation and contemplation.

The result is a home that not only responds to its site but celebrates it, creating a living experience that is both grounded and uplifting. The Perch Residence is an expression of the power of collaborative design, where architecture, interior design, and landscape work in concert to create something truly extraordinary.









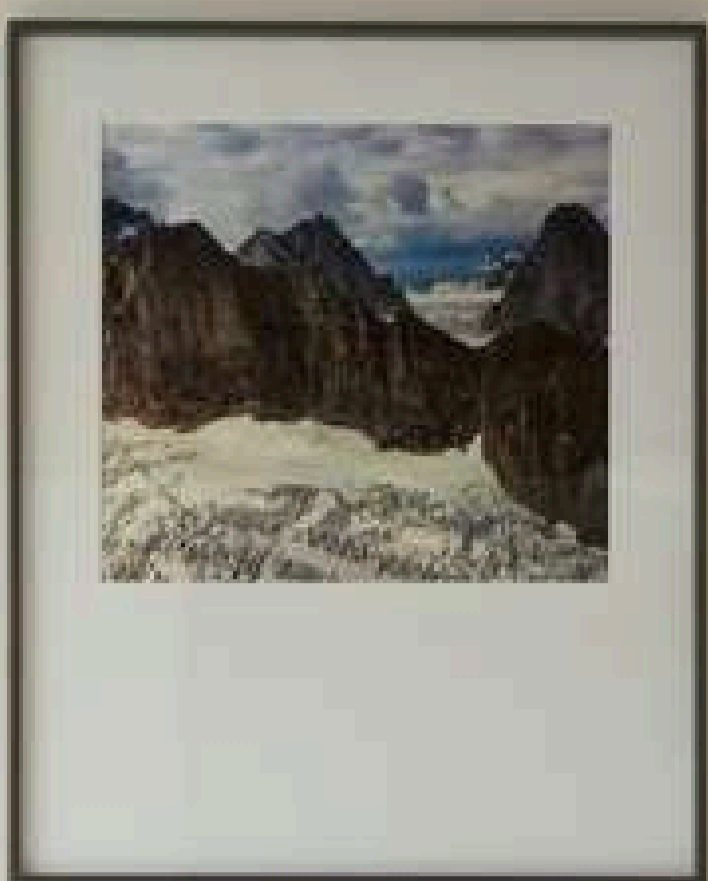
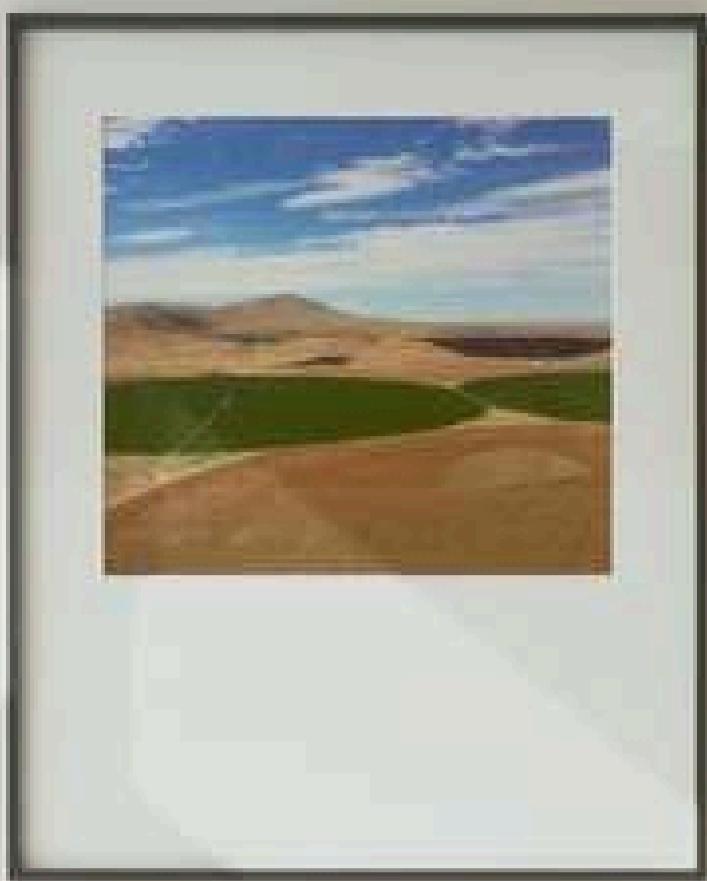














Inside | EDITION #103







the KITCHEN EDIT

The kitchen embodies modern sophistication with its harmonious blend of materials and textures. Light oak custom cabinetry in a warm honey tone provides a soft, natural backdrop, while dramatic white marble with delicate grey veining adorns both the waterfall island and backsplash. Sleek cylindrical pendant lights in chrome add contemporary elegance, suspended from the hemlock wood ceiling. Industrial-grade stainless steel appliances, including a professional gas range, offer functionality without compromising style. Modern bar stools featuring wood and metal frames with cream upholstery provide casual seating at the island. The polished concrete floors add an industrial edge while reflecting natural light. Minimal hardware in brushed steel maintains the clean aesthetic, while large sliding glass doors seamlessly connect to the outdoor dining space.



Modern industrial sophistication.

MODUSTRIA







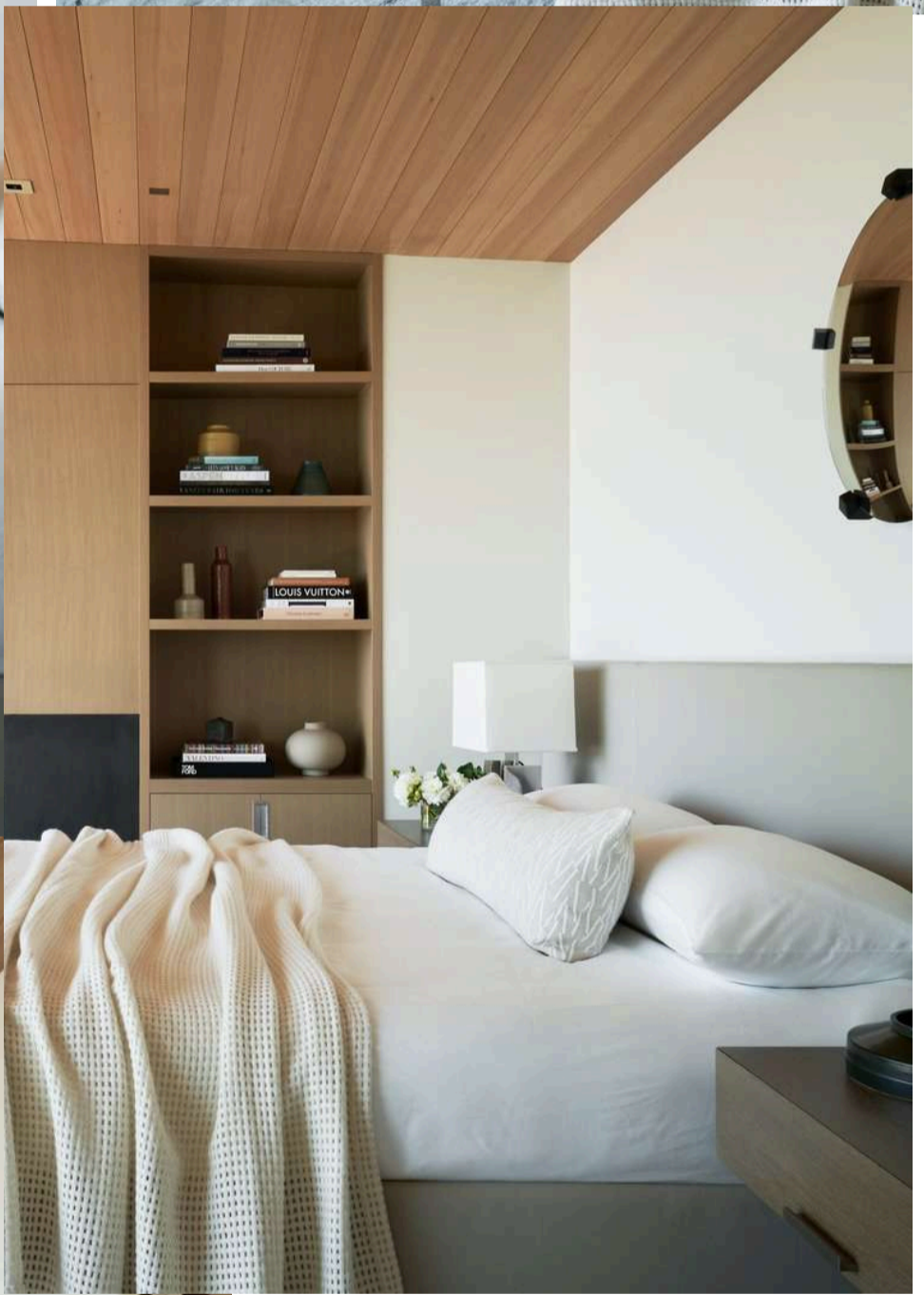
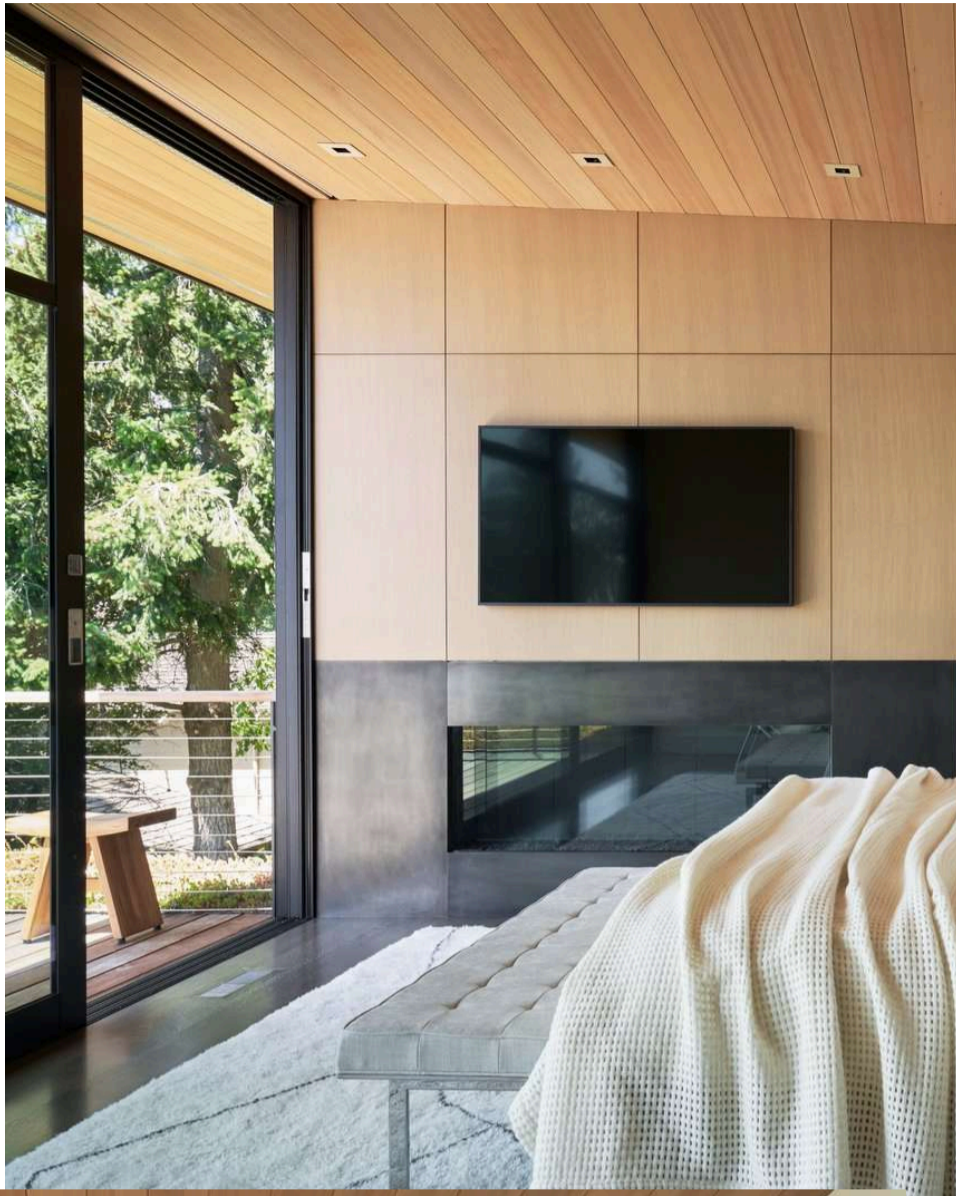
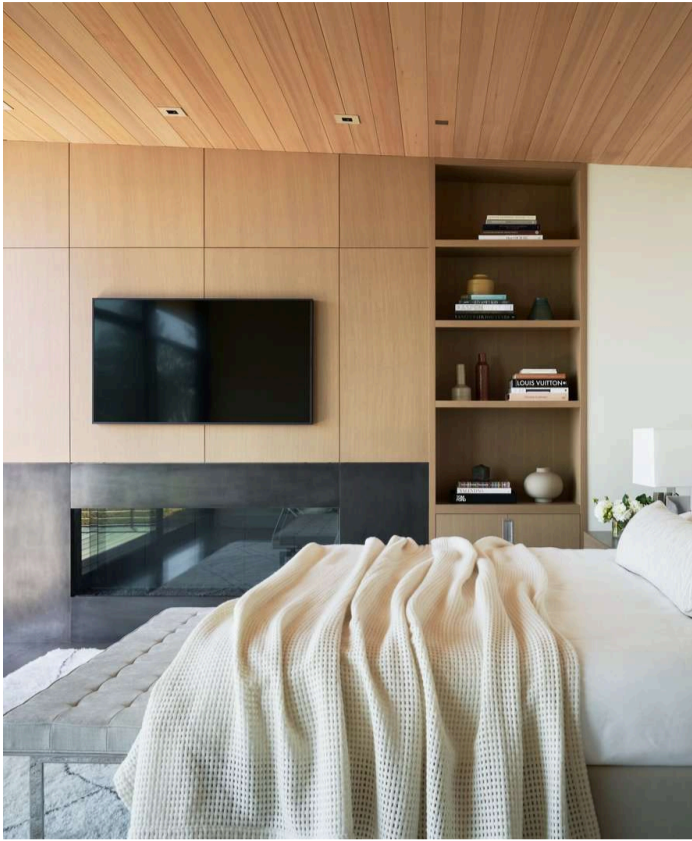


























Inside

CATALOGUE

SHOP / BE INSPIRED / EDITION 103

BEAUFORT CHAIR

White leather upholstered ultra modern sloping arm and geometric style armchair

AURUM LIVING



LIVING

LIVING STYLE



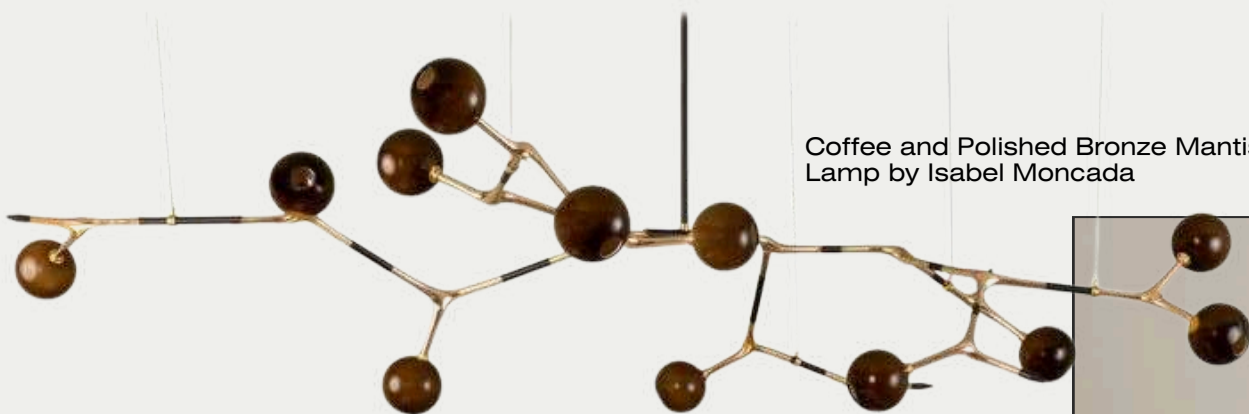
The Linden Table Lamp with a conical linen shade and hardwood and brass base by Studio Dunn



MANIF COFFEE TABLE

Modern, high-quality transparent acrylic table

HOZO DESIGN



Coffee and Polished Bronze Mantis 13 Pendant Lamp by Isabel Moncada

PARSONS CHAIR

Contemporary Leather Dining Chair
Parsons Chair in Matte Finish with Steel Legs

NEEENA



DINING

DINING STYLE



THE SAWBUCK TABLE

A solid oak trestle table inspired by the honest construction of a 19th century American sawbuck.

MATTHEW COX

VESSEL Lighting by 3M™ + Todd Bracher

CAFÉ 30" OVEN
Smart Built-In Convection Single Wall Oven

CAFÉ™ APPLIANCES



KITCHEN -

EN

KITCHEN STYLE



CATENARY STOOL

The design combines steel and wood frames with suspended Spinneybeck leather seats and back

TOKEN NYC

STRAP NIGHTSTAND

Sleek nightstand with dark wood drawer and geometric metal base.

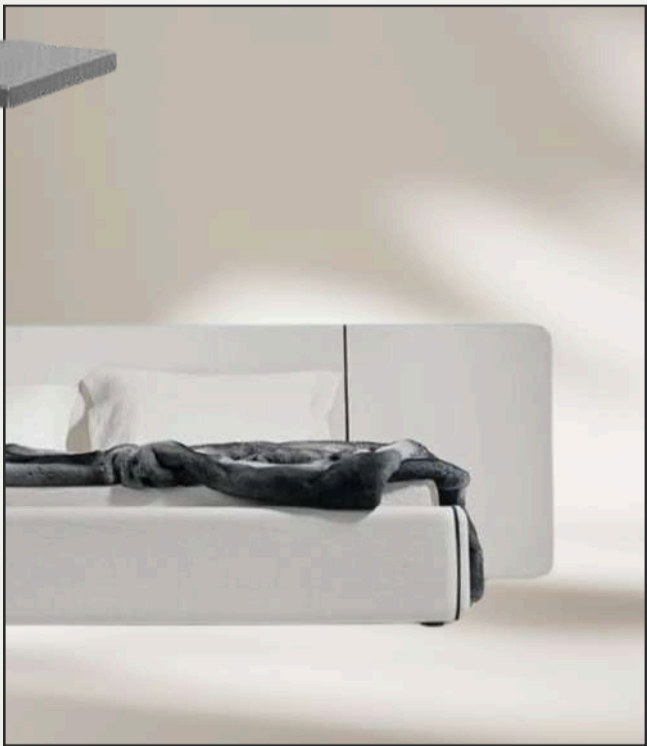
LUMA



BEDROOM STYLE



The Daydream Medium Table Lamp is an amazing light by Giorgio Collection



SUITE BED

Wooden structure long frame headboard with fully upholstered base designer bed

IVANO REDAELLI

BATH-ROOM

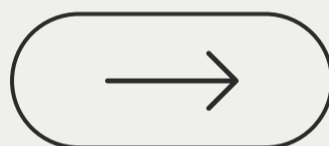
REFLEXLIGHT BATH

Flumood oval bathtub in a minimal
luxurious shape, structure and style

ANTONIO LUPI



BATHROOM STYLE



Kelly Wearstler Covet LED 4.5 inch
Polished Nickel Bracketed Bath Light
Wall Light



SABLE MIRROR

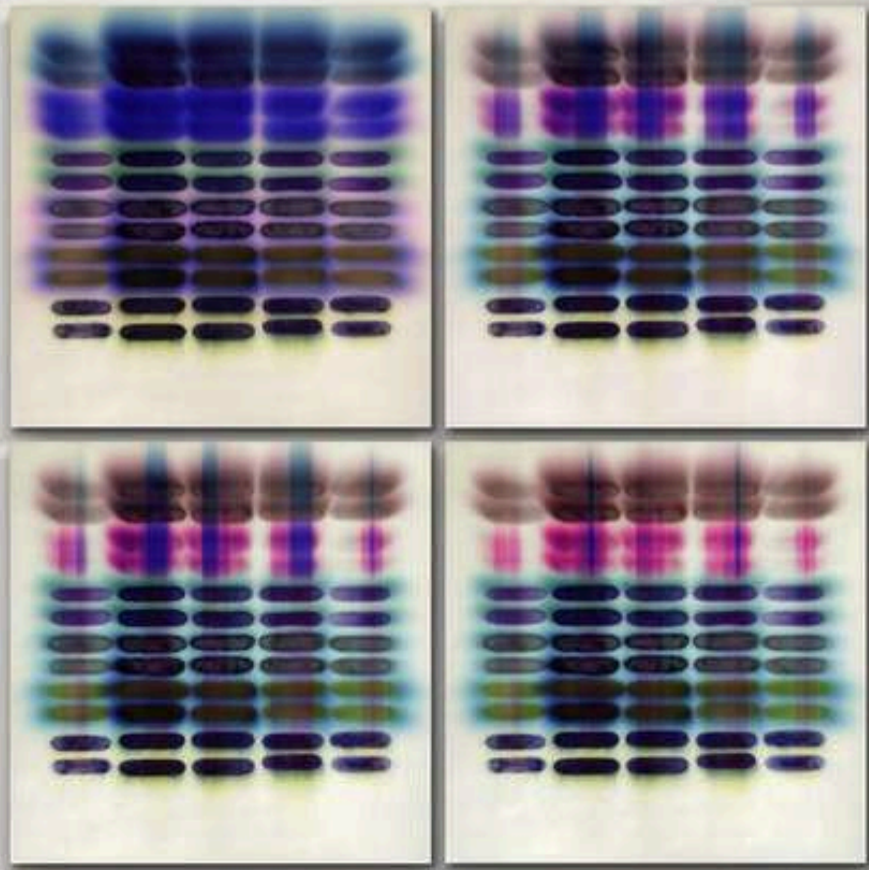
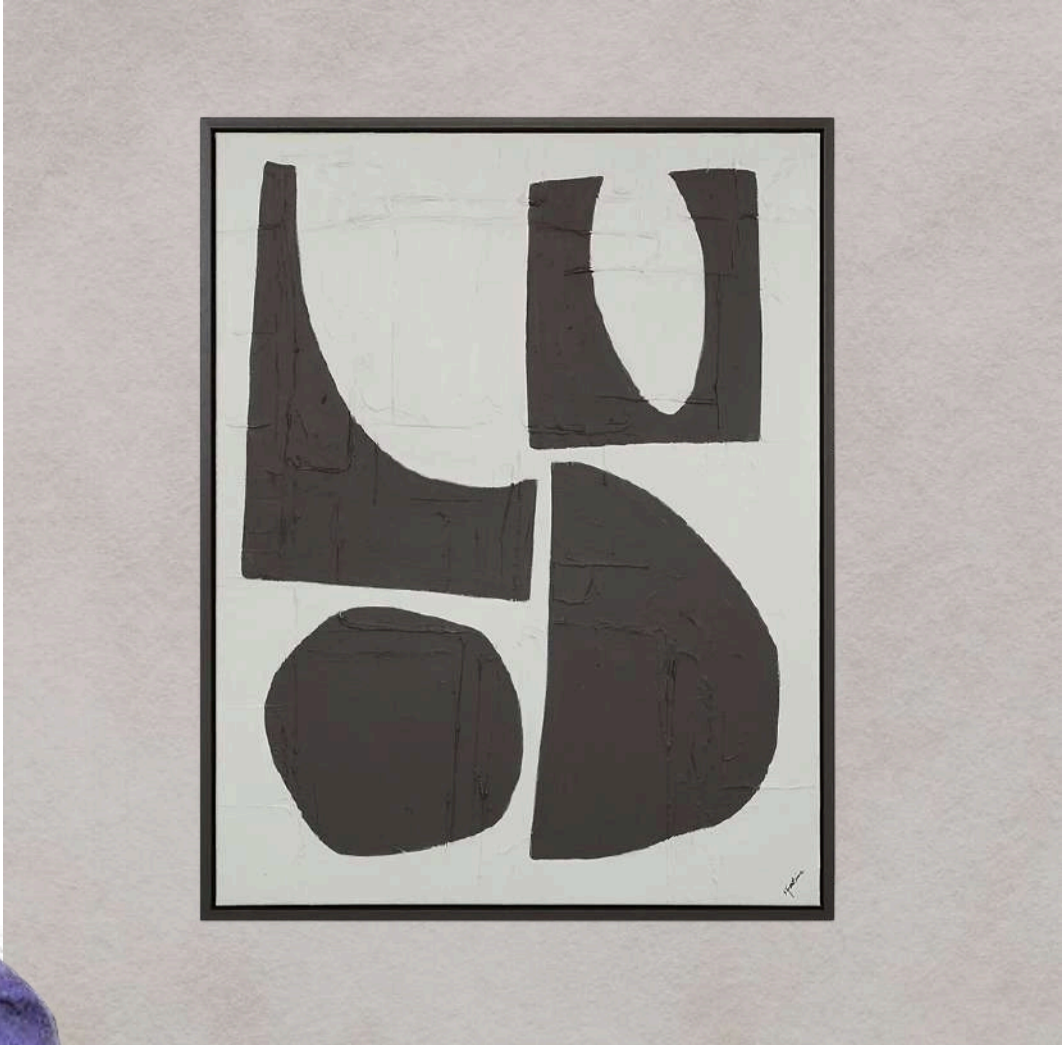
Minimal chrome floating frame
wall mirror

CASA VERRE

/INSIDE MODE



Postmodern art challenges convention, embracing bold visuals, irony, and abstraction. David Shrigley's Warhol Lives (2019) reflects witty commentary, while Sara Genn's Moon Woke Me Up Fifteen Times (2020) mesmerizes with rhythmic acrylic layers. Annie Morris' stacked sculptures evoke balance and whimsy, akin to Jaq Chartier's vivid Sun Test series. Melina Trusso's Stripe Life pulsates with energetic lines, contrasting the sculptural elegance of Stéphane Fontaine's Castagno. The Spun Armchair by Thomas Heatherwick for Magis merges function with fluid form, embodying postmodernism's playful spirit. This era thrives on vibrant experimentation, transforming everyday objects into striking artistic statements that captivate and inspire.



the OUTDOOR EDIT

The exterior living spaces create a serene Pacific Northwest retreat through thoughtful layering of materials and vegetation. Smooth concrete pathways and steps, punctuated by integrated LED lighting, guide movement through the terraced landscape. Modern white outdoor lounge furniture with clean lines contrasts with the natural setting, while a crisp white umbrella provides shade. The planting scheme combines ornamental grasses, purple lavender, and native perennials, creating year-round visual interest and texture. Weathered wood privacy screens and concrete retaining walls define different outdoor rooms while maintaining views. Steel cable railings ensure safety without obstructing sightlines to Lake Washington. Concrete planters filled with sculptural plants add architectural elements to the garden, while strategic lighting creates dramatic evening ambiance.



Modern forms integrated into the natural landscape.

MODSCAPE





Inside | EDITION #103









KRIOS CHAISE

Square lounge chair in teak and
bronzed-grey powder-coated
aluminum

SUMMIT



Black ebony finished hardwood coffee
table in deco minimalist style

OUTDOOR

OUTDOOR STYLE



LUSSO ARMCHAIR

Natural teak chair with a dark
oak finish, curved back with
sleek arm flow

INTERIOR ICONS

DOOR

















SETTING

THE

STANDARD

LEPANG

LUXURY INTERIORS

@lepangluxuryinteriors

LUXE



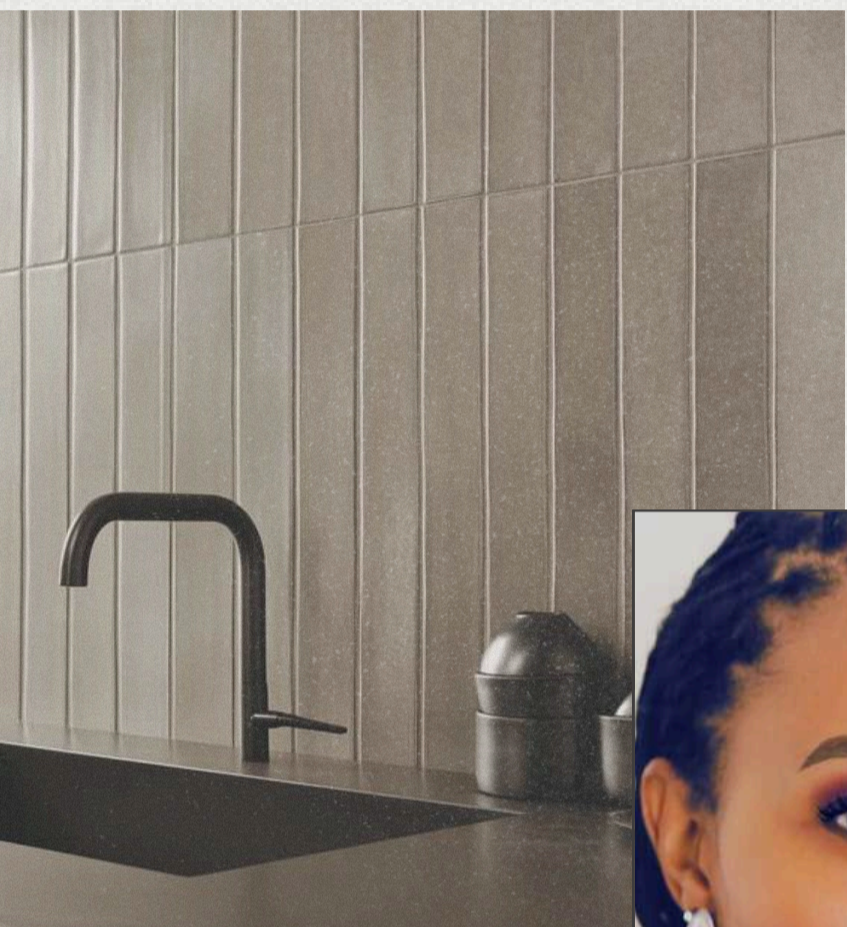
LIVING

cocoon

THE DREAM SOFA

@lepangluxuryinteriors

EDITION 103



Design is a canvas, and the brush is in our hands. Every choice, every stroke shapes the direction, breathing life into spaces and products that tell a story. This is what inspires me—to create with intention, to craft environments that feel alive. For design communities worldwide, this is more than work; it's our shared narrative.

LEPANG FERGUSON

@INSIDEINTERIORS MAG



REDEFINING LUXURY LIVING

WWW.INSIDEINTERIORSMAGAZINE.COM