

EDITION #102 FEBRUARY 2025

Inside

LIFESTYLE & INTERIORS



GNAPLE

Inside

EDITION #102



Inside Houston's prestigious Memorial area, *Stolle House* is a beautiful fusion of Mediterranean elegance and modern precision. Designed by a renowned architecture and design studio, with expert consultants and builders, the residence balances timeless materials, contemporary forms, and artisanal craftsmanship. A symphony of limestone, wood, and brass, it redefines luxury living with effortless sophistication.



Eric Laignel

CAFÉ

DISTINCT BY DESIGN™



Café™ ENERGY STAR® 23.2 Cu. Ft. Smart Counter-Depth 4-Door French-Door Refrigerator
With Dual-Dispense AutoFill Pitcher

WWW.CAFEAPPLIANCES.COM



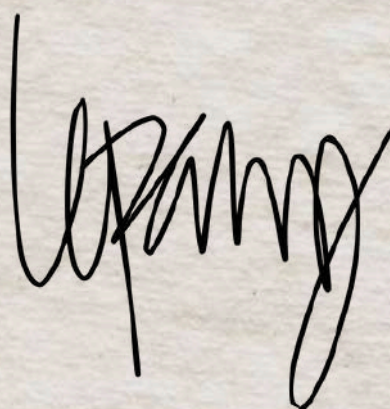
A LOVE Letter

TO TIMELESS DESIGN

There's something profoundly poetic about the meeting of old Paris and the Mediterranean—where nostalgia lingers in limestone walls, and the air carries the warmth of sun-soaked stone. It's a style that speaks to my soul, a convergence of history and tranquility, where every detail tells a story. The French have a way of weaving elegance into even the simplest elements—an effortless refinement that whispers of the past. The Mediterranean, in contrast, breathes in openness—welcoming space, air, and light in a way that feels eternal, unconfined.

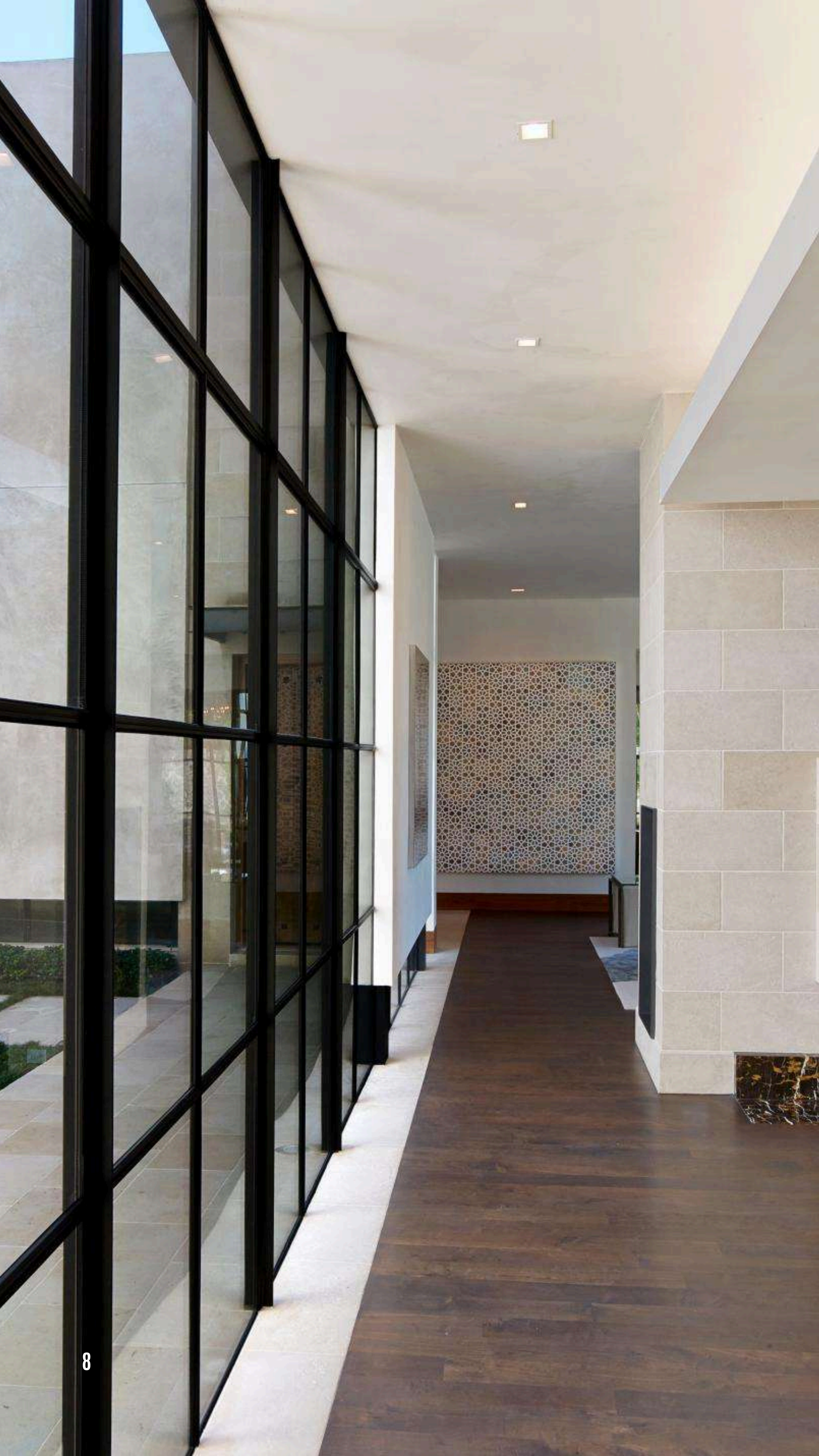
Together, they form a rich elemental harmony: reclaimed woods kissed by time, textures that feel both raw and refined, and a palette of soft neutrals that calm the senses. The limestone, the worn plaster, the aged oak beams—all possess a quiet beauty, a sense of permanence. There's romance in the patina, a poetic softness in the imperfection.

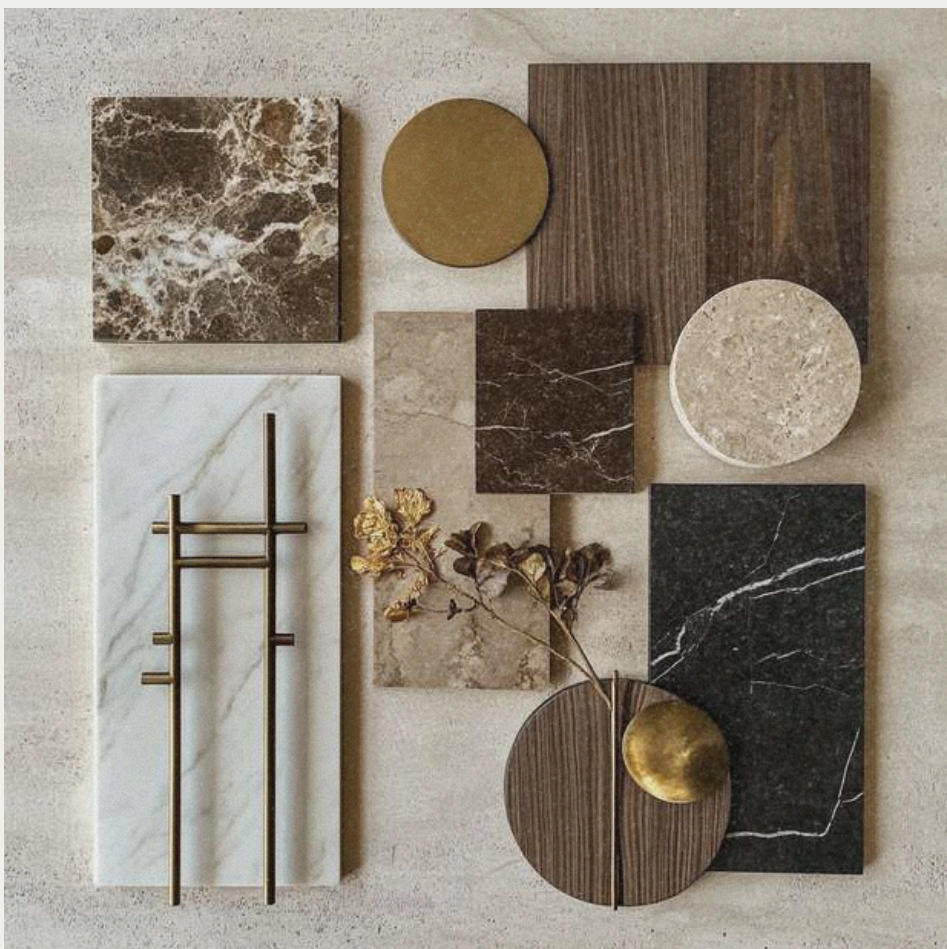
This style is more than aesthetics; it's a way of living. A balance of grandeur and ease, rooted in history yet endlessly modern. It allows for spaces that feel personal, filled with character yet unforced. It's the feeling of warmth, serenity, and timeless elegance—a home that doesn't just exist but truly lives.



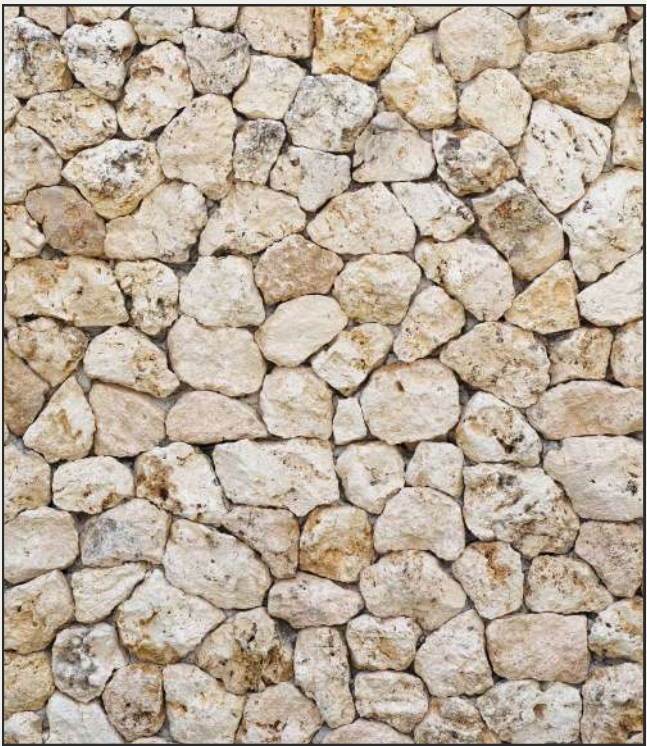








TEXTURA TERRA



This moodboard embodies the refined materiality and timeless elegance of the Stolle House. The palette is a sophisticated interplay of warm neutrals, rich browns, and deep, grounding blacks, softened by organic textures. Honed limestone, polished marble, and natural wood create a tactile experience that feels both modern and rooted in history. Brass accents add a sense of understated luxury, while leather elements lend warmth and depth. The mood is effortlessly transitional—balancing contemporary minimalism with old-world grandeur. Every material tells a story, crafting a home that is at once bold, serene, and deeply connected to its natural surroundings.



INSIDE MAGAZINE *FEBRUARY 2025*

TIMELESS CHÂTEAU

A TIMELESS FUSION OF FRENCH ELEGANCE AND MEDITERRANEAN WARMTH,
REDEFINED IN MODERNITY.

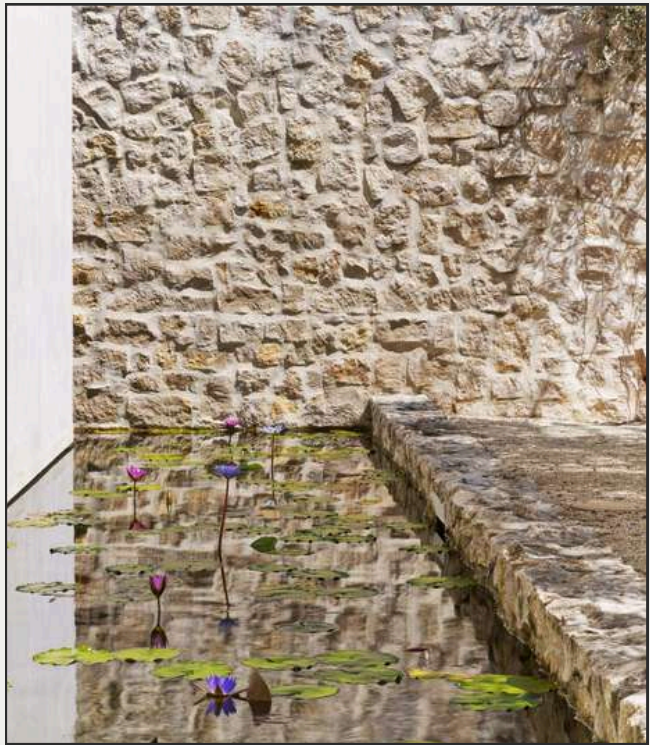
ÉPOQUE TERRA



In Houston's prestigious Memorial area, where traditional estates typically dominate the landscape, the Stolle House by Rottet Studio Architecture & Design, is a synthesis of contemporary design and timeless Mediterranean influence. This striking 10,000-square-foot residence represents a rare residential project for Lauren Rottet's acclaimed studio, known primarily for its innovative hospitality work and commercial spaces.

The project team, led by Erick Ragni alongside Marissa Iacovoni and Deedee Sanchez of Rottet Studio, collaborated with an exceptional roster of specialists including Mia Jones Interiors as design consultant and Morris Hullinger serving as both architect of record and general contractor. The resulting architecture presents a sophisticated composition of clean-lined volumes, where modernist precision meets old-world materiality.

The home's exterior is commanding with its geometric white masses floating above rough-hewn limestone walls, creating a compelling dialogue between contemporary and traditional elements. McDugaldSteele's landscape architecture enhances this interplay, with precisely manicured hedges and an ancient olive tree serving as organic counterpoints to the architecture's crisp angles. The entry sequence, marked by a chevron-patterned wooden gate, reveals a thoughtful progression of spaces that manage the transition from a public to a private realm.



Inside, the interior architecture showcases Rottet Studio's expertise in spatial choreography. The heart of the home features a stunning great room where reclaimed wooden beams frame a sophisticated progression of living spaces. The kitchen, a tour de force of functionality and style, combines industrial-grade stainless steel appliances with warm wood elements and a monumental butcher block island. Chavez Carpentry's exceptional millwork is evident throughout, particularly in the custom cabinetry finished in a sophisticated gray-brown tone that complements the limestone floors sourced and fabricated by Alkusari Stone.

The living areas display an artful balance of textures and tones — from the sleek charcoal upholstery to the geometric patterns of Islamic-inspired wall art. Floor-to-ceiling steel-framed windows, a signature element throughout the home, blur the distinction between interior and exterior spaces while flooding rooms with natural light. SES Design Group's carefully integrated audiovisual systems remain discreet, allowing the architecture and furnishings to command attention.

The material palette is both refined and robust — honed limestone floors flow seamlessly from interior to exterior spaces, while Venetian plaster walls provide subtle texture and depth. The kitchen's extensive use of stainless steel and weathered wood creates a compelling contrast that speaks to both professional functionality and organic warmth. Custom stonework by Alkusari Stone appears throughout, from the massive fireplace surrounds to the exterior walls, where it's skillfully combined with modern stucco surfaces.

Perhaps most impressive is how the home manages to feel both monumental and intimate. Despite its considerable square footage, thoughtful space planning creates a series of well-proportioned rooms that flow naturally into one another and connect seamlessly with exterior courtyards and terraces. The result is a residence that feels both grand and genuinely livable — a testament to Rottet Studio's ability to translate its hospitality expertise into the residential sphere.

This landmark project is a compelling example of how contemporary architecture can respect traditional materials and principles while pushing boldly into new territory. The Stolle House demonstrates that luxury residential architecture in Houston has evolved far beyond traditional interpretations of Mediterranean or French styles, embracing instead a sophisticated global modernism that feels both timeless and thoroughly contemporary.

















Inside | EDITION #102









Inside | EDITION #102

the KITCHEN EDIT

In the heart of the Stolle House, the kitchen exemplifies industrial elegance merged with rustic warmth. Anchored by centuries-old reclaimed wooden beams that crown the space, the room balances professional-grade functionality with sophisticated design. A monumental butcher block island, crafted from end-grain wood, serves as both culinary workspace and sculptural centerpiece. The perimeter cabinetry, finished in a sophisticated gray-brown tone, features clean-lined drawer fronts with minimalist metal pulls. A commercial-grade stainless steel range with pot filler stands against a marble backsplash, while a professional-style hood commands attention overhead. Steel-framed windows flood the space with natural light, highlighting the limestone flooring's subtle variations. A wall of floor-to-ceiling storage cabinets conceals appliances while maintaining the kitchen's streamlined aesthetic. The space opens seamlessly to both indoor and outdoor entertaining areas, with views of the herb garden beyond.



INDUSTRIAL WARMTH







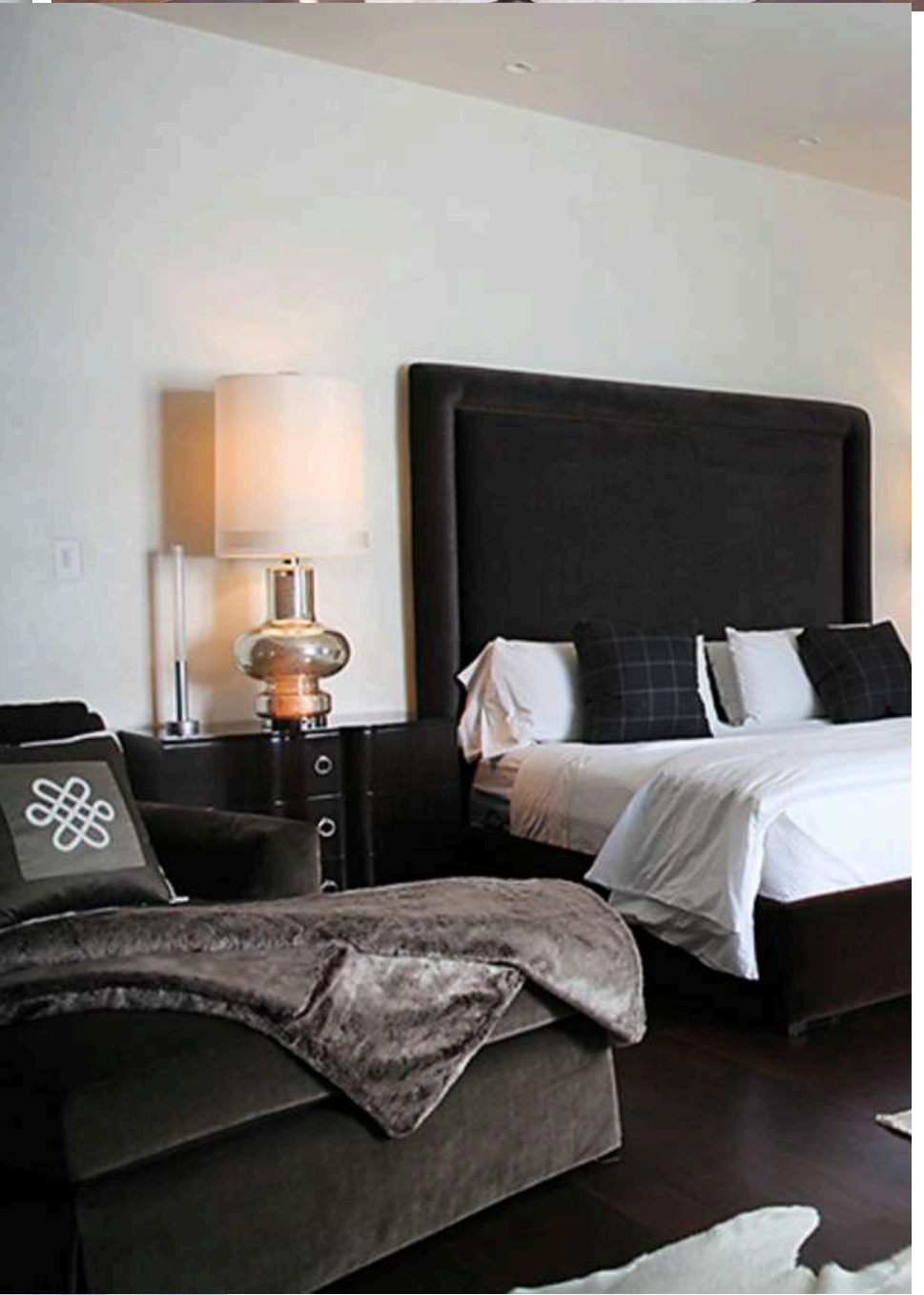
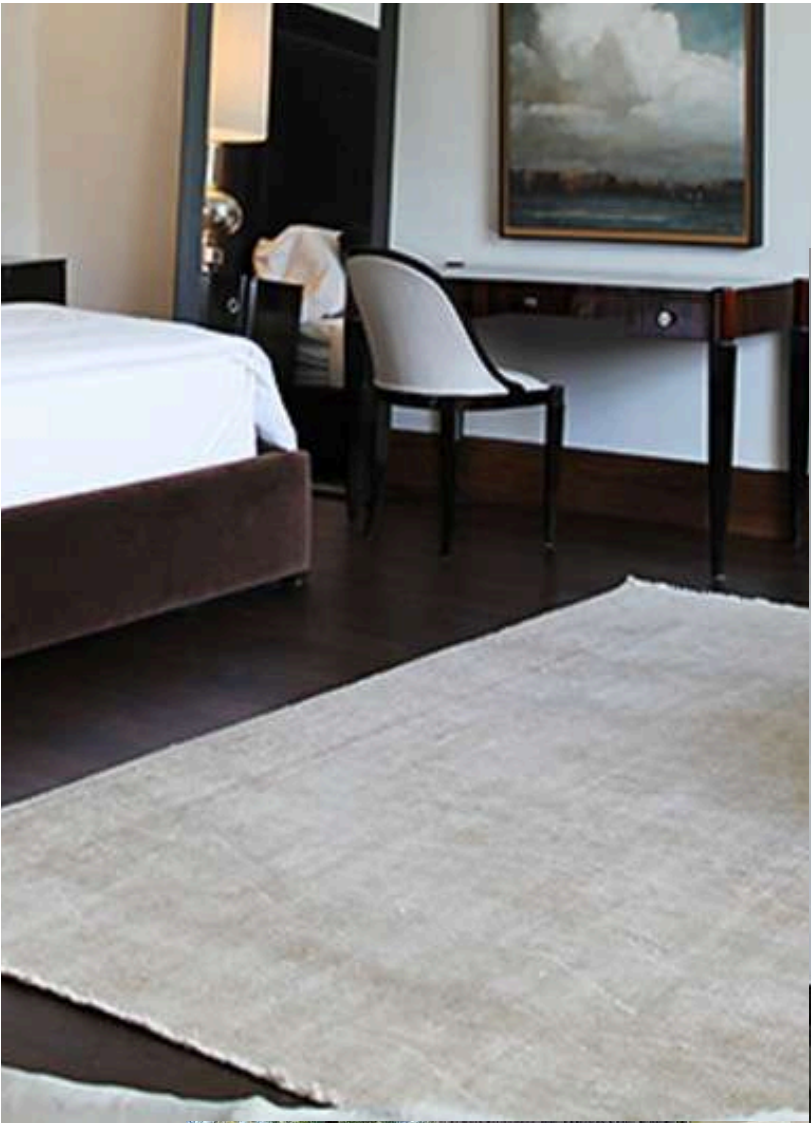




















Inside

CATA- LOG UE

SHOP/BE INSPIRED/EDITION 102

LIVING

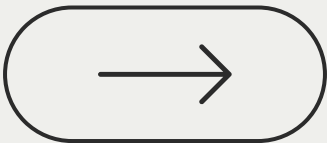
SCARLETT

Upholstered fabric or leather
dormeuse with a bolser cushion

PORADA



LIVING STYLE



COCOON LUSH

Cocoon Lush collection, soft seating
minimalist modular base sofa

LEPANG™

DINING

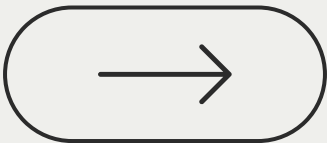
LIVEN CHAIR

Dark olive leather upholstered ultra modern sleek design dining chair

ULTURO



DINING STYLE



MAIKOZAI TABLE

Hardwood table with vintage chrome geometric legs in a modern sculptural style

KOZAI STYLE

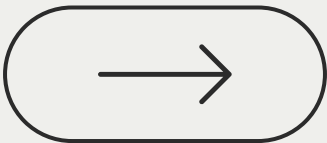
KITCHEN

CAFÉ™ 48"
Smart Dual-Fuel Commercial-Style
Range with 6 Burners and Griddle

CAFÉ™ APPLIANCES



KITCHEN STYLE



MARIANNE CABINET

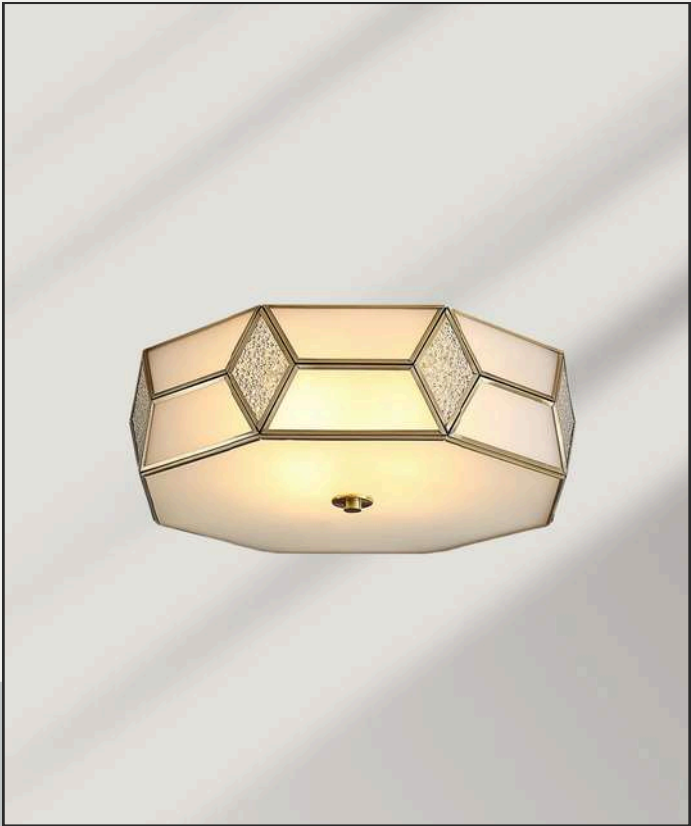
Tall Washed Mahogany cabinet with
glass and wood drawers and brass
accents

MANILA CLASSICS

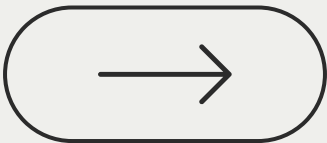
OCTAGON BEDROOM FLUSH LIGHT

Brass finished metal flush mount with octagonal shapes with matte and decorative elements

CREATE WHITE



BEDROOM STYLE



ANDERSON CANOPY BED

The iron canopy bed features a headboard upholstered in a classic boucle fabric with decorative leather straps

FOUR HANDS

BATHROOM

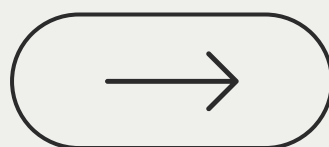
OLIVIA FREESTANDING BATH

Acrylic construction high gloss white freestanding bathtub

DURALUXE



BATHROOM STYLE



MARIBOU BENCH

Curved modern French design bench in grey linen upholstery and white oak legs

TRIBU MODERNE

/INSIDE MODE



French Mediterranean Minimalism blends heritage and modernity, embracing a refined yet organic aesthetic. The palette is earthy and sun-kissed, with hues of warm limestone, soft sand, rich walnut, aged bronze, and deep onyx. Textures play a vital role—natural stone, plastered walls, weathered wood, and patinated metals create a sense of depth and authenticity. Furniture is sleek yet soulful, with curved silhouettes, sculptural lighting, and artisanal details echoing Old World charm. Minimalist layouts ensure airiness and balance, where each element speaks to craftsmanship. This approach distills the essence of Mediterranean tradition into a serene, contemporary, and effortlessly luxurious living experience.



the OUTDOOR EDIT

The exterior spaces of the Stolle House epitomize refined Mediterranean modernism. A pristine lawn stretches before the geometric white façade, where precisely cut limestone walls provide textural contrast to smooth stucco surfaces. The focal point - a gnarled olive tree - stands sentinel against the rough-hewn stone wall, its silvery foliage catching sunlight throughout the day. Modern gas lanterns in black metal frames flank the entry, their clean lines echoing the home's steel-framed windows.

The landscaping, meticulously executed by McDugaldSteele, features manicured boxwood hedges that create clean horizontal lines against the vertical architecture. A series of concrete pavers, set in a disciplined grid pattern, leads to the entry, while reflecting pools introduce a serene water element. Private courtyards, accessible from various rooms, feature limestone terraces and thoughtfully placed planters. The backyard reveals a limestone-edged pool, its clean lines complementing the architecture's modernist geometry, while strategically placed lighting transforms the space at dusk into an ethereal entertainment venue.



CONTEMPORAINE













PUGLIA 3 SEAT SOFA

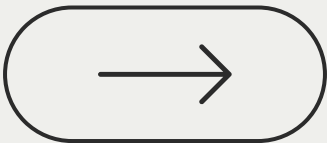
Sleek modern rattan outdoor sofa
with superior durability and weather
resistant upholstery

POLY & BARK



OUTDOOR

OUTDOOR STYLE



ARIN TABLE

Hardwood minimalist table in a
sleek post style leg frame

STYLUXE

















SETTING

THE

STANDARD

LEPANG

LUXURY INTERIORS

@lepangluxuryinteriors

do your thing



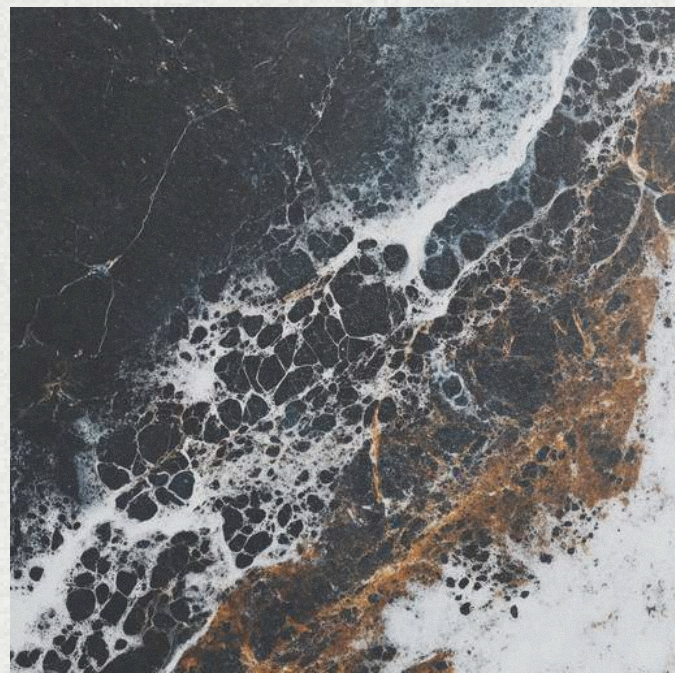
LUXE LIVING

cocoon

THE DREAM SOFA

@lepangluxuryinteriors

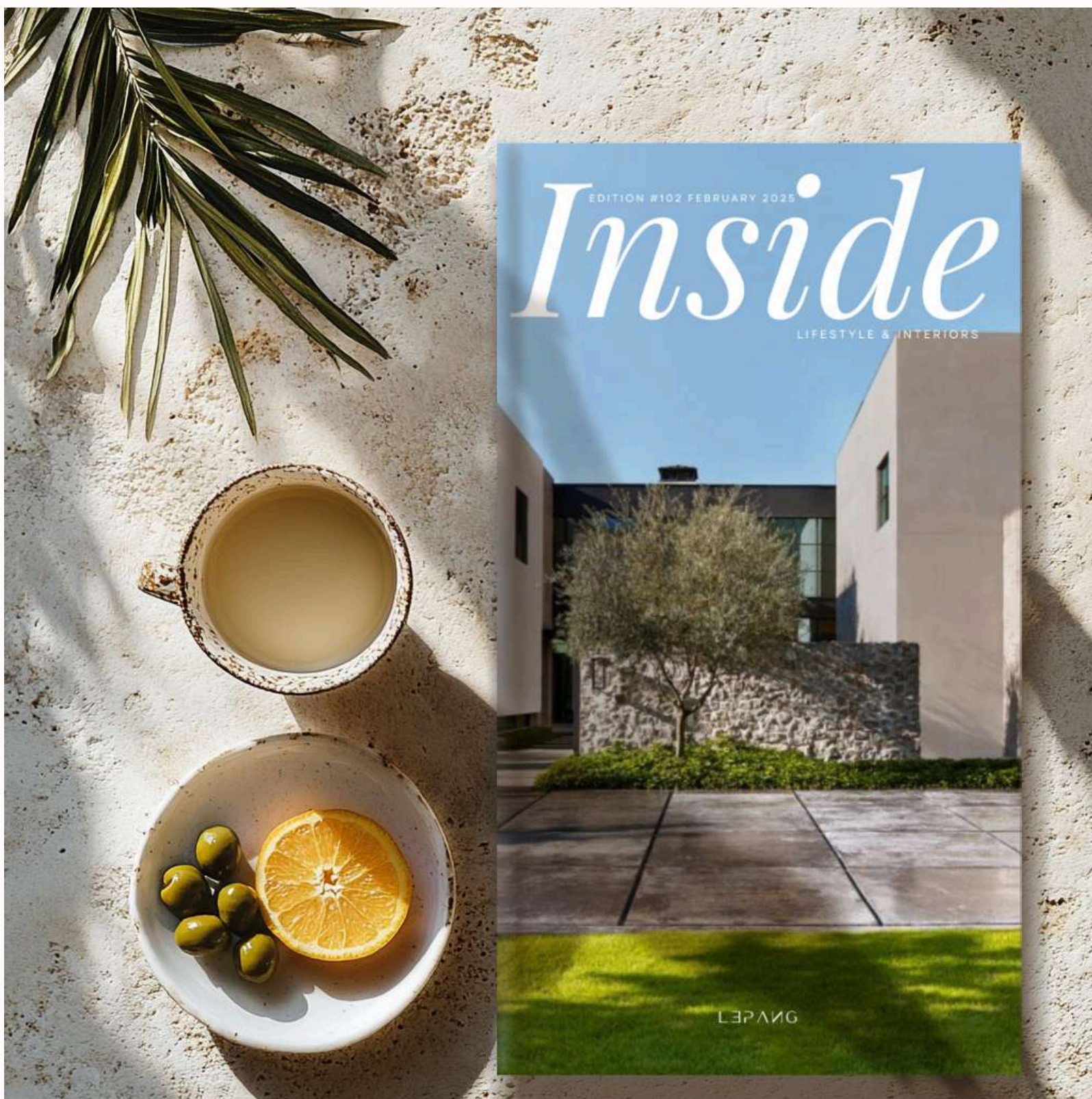
EDITION 102



Design is a canvas, and the brush is in our hands. Every choice, every stroke shapes the direction, breathing life into spaces and products that tell a story. This is what inspires me—to create with intention, to craft environments that feel alive. For design communities worldwide, this is more than work; it's our shared narrative.

LEPANG FERGUSON

@INSIDEINTERIORS MAG



REDEFINING
LUXURY
LIVING

luxury —→

www.insideinteriorsmagazine.com