

EDITION #106 MARCH 2025

Inside

LIFESTYLE & INTERIORS



GNAPET

Inside

EDITION #106



Inside Cherry Hills Village, Colorado, Number 3. Countryside Residence is a masterclass in refined modernism, crafted by BOSS Architecture with interiors by Jessica Doran. Built by Cadre General Contractors, with landscape by Three Sixty Design, the home balances natural textures, clean lines, and warm minimalism, seamlessly integrating architecture, light, and the surrounding rural landscape.



Raul Garcia

C A F E

D I S T I N C T B Y D E S I G N TM



Café™ Wine Center in Stainless Steel / Brushed Black

WWW.CAFEAPPLIANCES.COM



SYLVARA

A DWELLING WHERE WILDERNESS AND REFINEMENT INTERTWINE.

I've been told I have a bias when it comes to architectural styles. Perhaps that's true—many of the homes we showcase seem to share a certain aesthetic. But it's not a matter of preference, nor is it intentional. If I had to explain it, I'd say it comes down to something deeper—what resonates not just with us, but with our readers.

We've featured fewer urban homes compared to those set against mountains, deserts, or the ocean, and that's no coincidence. Time and again, we've found that our audience gravitates toward architectural serenity—homes that don't simply exist in their environments but are shaped by them. There's something undeniably compelling about spaces that embrace their surroundings, responding to light, landscape, and texture in a way that feels natural and effortless.

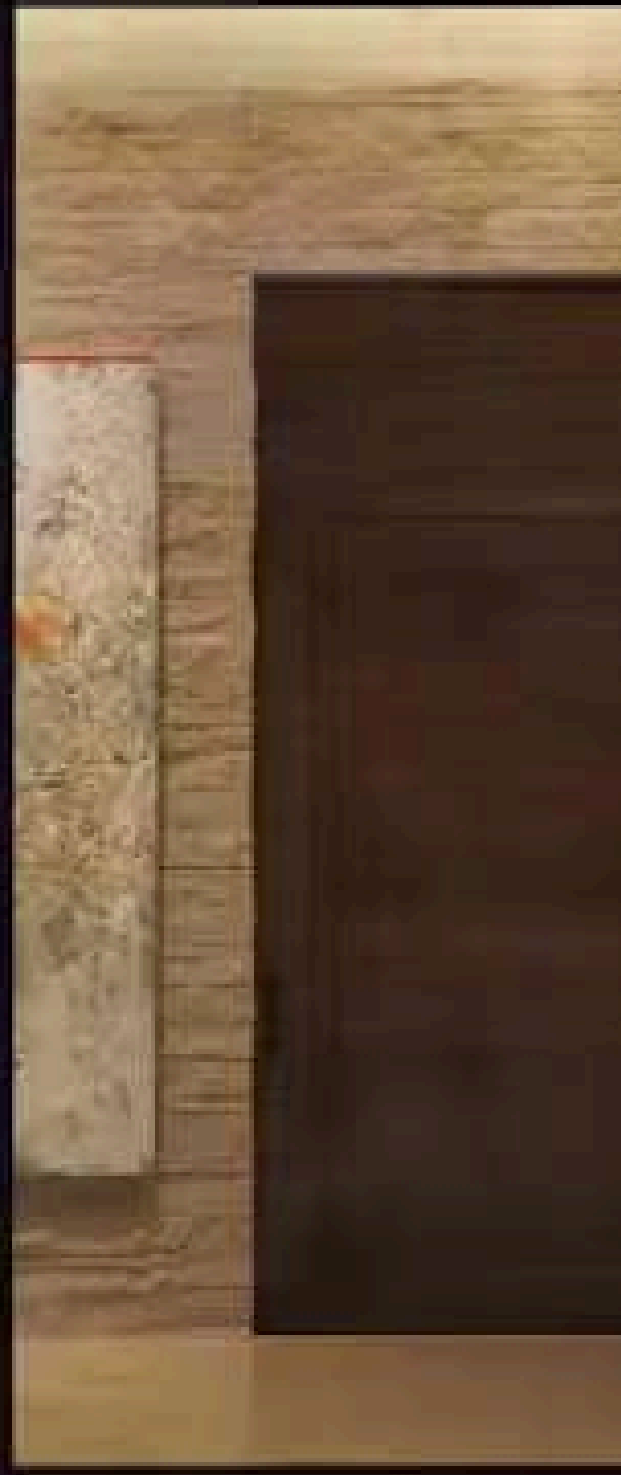
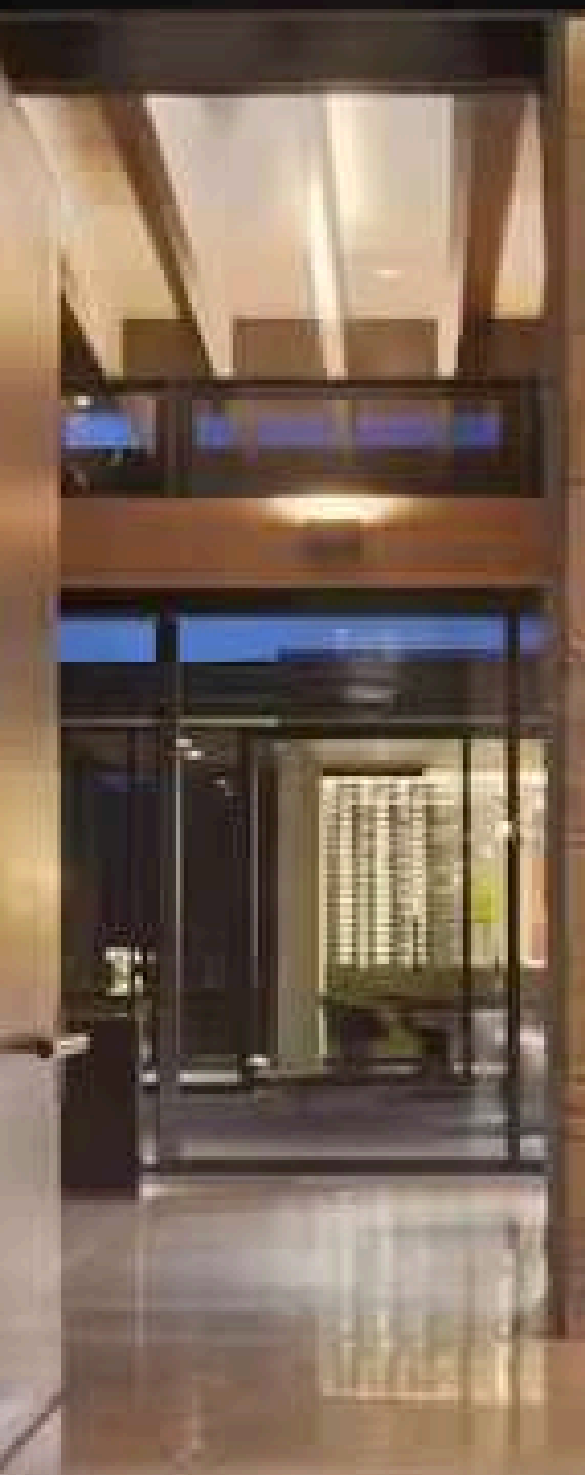
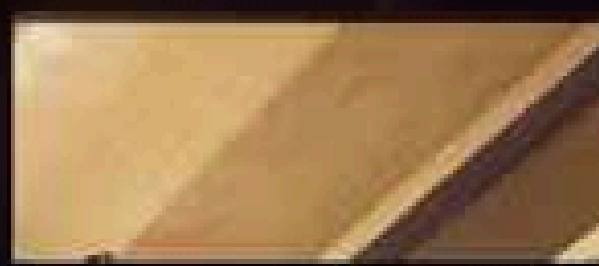
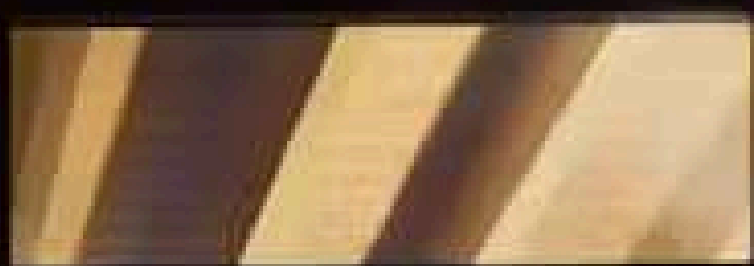
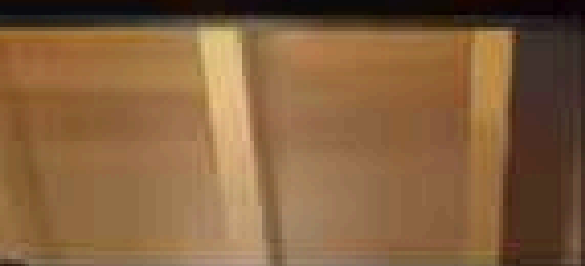
Number 3. Countryside Residence is no exception. It's a study in restraint and refinement, seamlessly blending into its rural setting with quiet confidence. This home is a testament to ingenuity, grace, and the idea that architecture is most powerful when it respects the land on which it stands.

Lepang







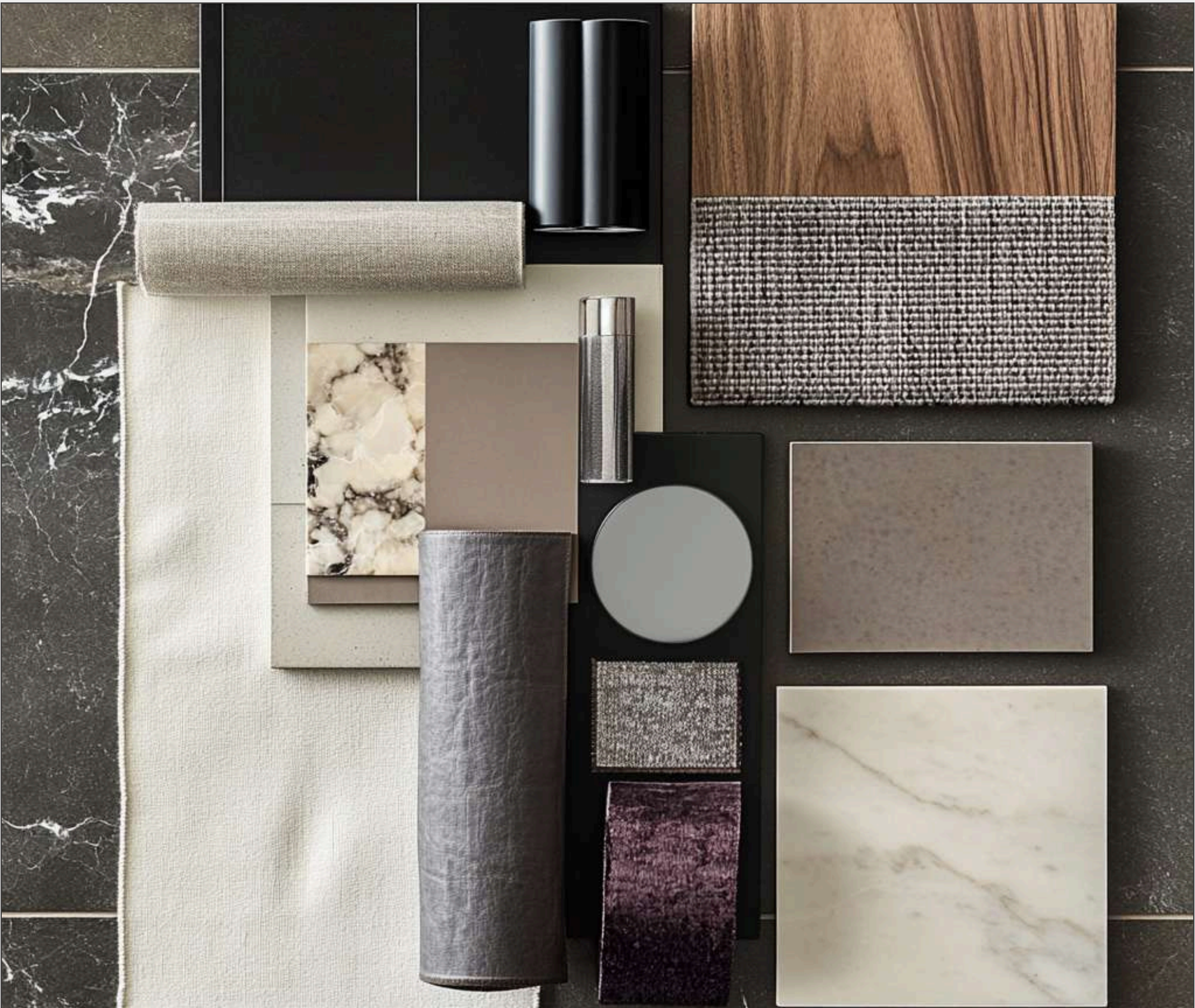




106
MOODBOARD

GRANITUM

This contemporary residence celebrates architectural transparency and material honesty through a sophisticated palette of warm woods, black metal framing, and polished concrete. The aesthetic is characterized by horizontal lines, dramatic wooden ceiling planes, and walls of glass that dissolve boundaries between inside and out. Warm walnut paneling contrasts with cool stone surfaces while vibrant art punctuates otherwise restrained spaces. The interiors feature low-profile furniture in rich, textural fabrics—velvet sofas in muted tones and accent chairs with organic patterns. Throughout, the design principle remains consistent: architectural simplicity elevated by thoughtful lighting, statement art pieces, and meticulous craftsmanship. Natural light is treated as a material itself, washing across surfaces to highlight textures and create an ever-changing interior landscape that responds to the surrounding environment.



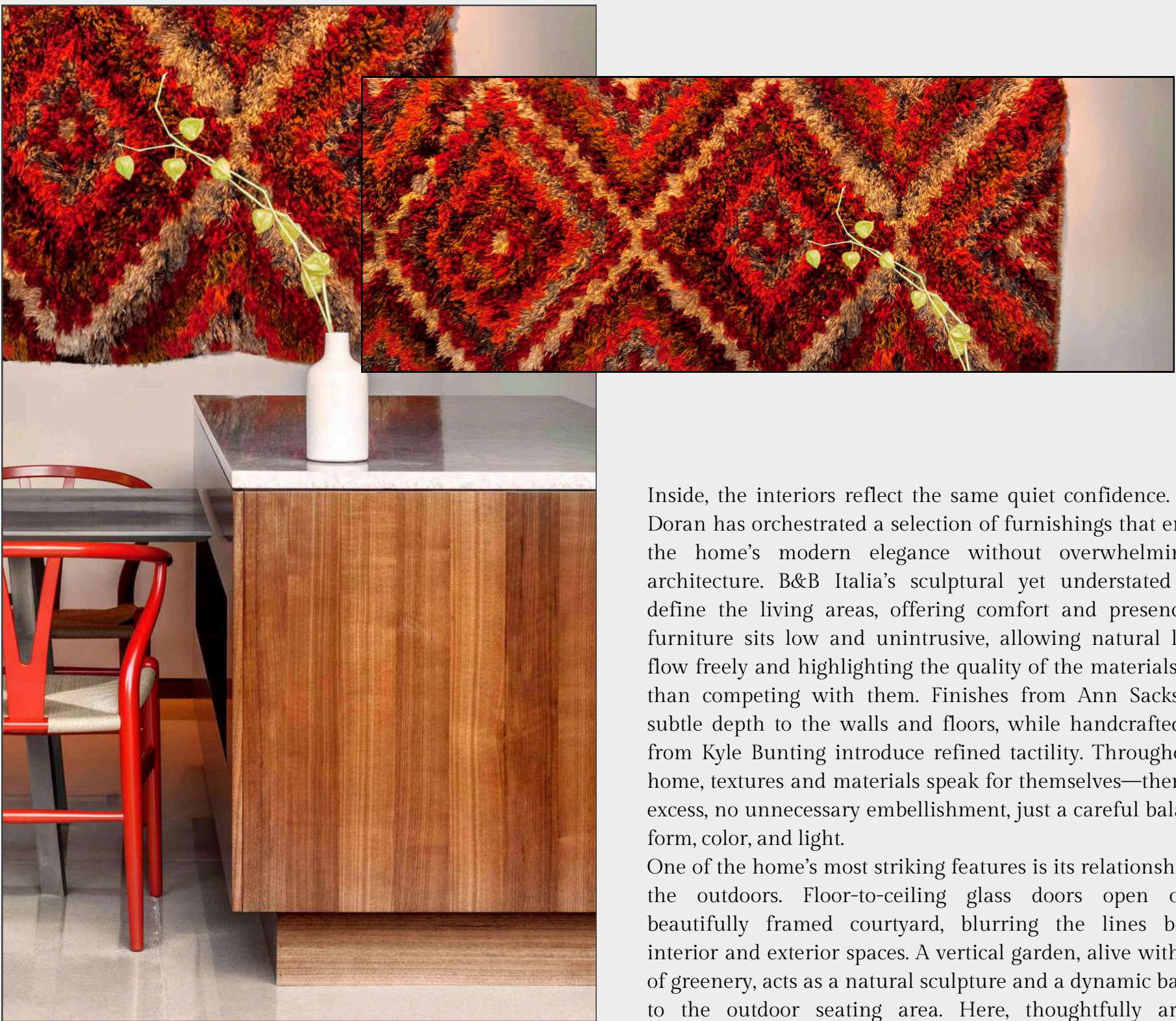
BOLD ARCHITECTURAL
LINES



ELEMENTAL

A RESIDENCE THAT ELABORATES RAW TEXTURES AND ELEGANT
FORMS THAT CREATE A DIALOGUE BETWEEN STRUCTURE AND
ENVIRONMENT.

WHERE SPACE BREATHES



Built in the picturesque backdrop of Cherry Hills Village, Colorado, Number 3. Countryside Residence is a refined expression of modern architecture, with tones of minimalism, warmth, and character. Designed by BOSS Architecture, the house embraces modernist principles while respecting the natural surroundings, creating a balance between built form and open land. With interiors by Jessica Doran Interiors, expert construction by Cadre General Contractors, and a landscape design curated by Three Sixty Design's Courtney McRickard, every detail has been considered to enhance function and beauty. Javier Ten of Artenluz designed the lighting to highlight the home's architectural depth. At the same time, a selection of premium finishes and furnishings from B&B Italia, Ann Sacks, Kyle Bunting, and Lindsey Adelman add layers of texture and refinement.

The architecture is defined by its clean lines, expansive glass, and elemental flexibility created by the use of natural materials. The structure feels grounded and open—wood-clad soffits extend outward to create deep overhangs, while black steel-framed glass walls dissolve the barrier between indoors and outdoors. Concrete surfaces, warm wood tones, and metal accents form a carefully curated palette that is rich in contrast yet inherently calming. The house is not just about aesthetics; it is about the experience of moving through a space that feels effortless, intentional, and deeply connected to its setting.

Inside, the interiors reflect the same quiet confidence. Jessica Doran has orchestrated a selection of furnishings that enhance the home's modern elegance without overwhelming the architecture. B&B Italia's sculptural yet understated pieces define the living areas, offering comfort and presence. The furniture sits low and unintrusive, allowing natural light to flow freely and highlighting the quality of the materials rather than competing with them. Finishes from Ann Sacks bring subtle depth to the walls and floors, while handcrafted hides from Kyle Bunting introduce refined tactility. Throughout the home, textures and materials speak for themselves—there is no excess, no unnecessary embellishment, just a careful balance of form, color, and light.

One of the home's most striking features is its relationship with the outdoors. Floor-to-ceiling glass doors open onto a beautifully framed courtyard, blurring the lines between interior and exterior spaces. A vertical garden, alive with layers of greenery, acts as a natural sculpture and a dynamic backdrop to the outdoor seating area. Here, thoughtfully arranged furniture mirrors the refined simplicity of the interiors, creating a space for relaxation that is both elegant and inviting. The landscape, designed by Three Sixty Design, takes a minimal yet intentional approach—structured where necessary, left wild where it enhances the sense of place. The result is a setting that feels curated but never forced, allowing nature to take center stage.

Lighting plays a crucial role in shaping the home's mood and character. Lindsey Adelman's fixtures, selected for their sculptural quality, add a soft drama to the interiors, while Javier Ten's lighting design subtly enhances the natural textures of the space. Every fixture has been chosen not just for function, but for its ability to create warmth and atmosphere. Subtle lighting solutions bring warmth and dimension to the home, enhancing the substance of wood, steel, and stone without overpowering the serene aesthetic.

Beyond its aesthetic appeal, Number 3. Countryside Residence is a study in balance—between openness and intimacy, structure and nature, contemporary design, and timeless craftsmanship. It is a home designed to be lived in, experienced, and appreciated over time. The architecture provides a canvas, the interiors add warmth and character, and the landscape brings it all together in a way that feels effortless. This is modern living at its most refined: a home that respects its surroundings, elevates everyday moments, and offers a quiet kind of luxury—one that isn't about excess, but about the perfect harmony of space, light, and material.

















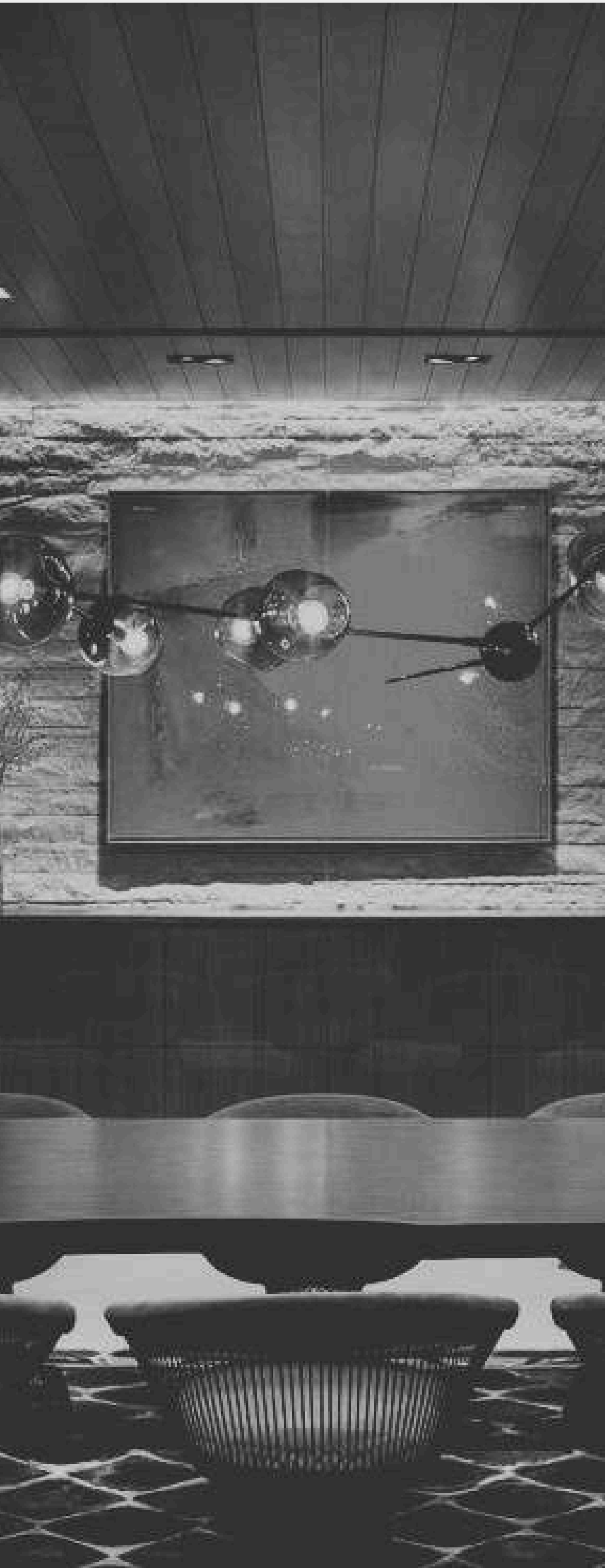
Inside | EDITION #106



Inside | EDITION #106









Inside | EDITION #106

THE *KITCHEN* EDIT



Fresh, clean lines defining modern living environments

FRESCO

The kitchen embodies refined functionality anchored by walnut cabinetry with minimal hardware and sleek stainless steel accents. The sophisticated material palette juxtaposes warm wood with the cool precision of stone countertops, creating a space that feels both inviting and technically advanced. Floor-to-ceiling black-framed windows transform the working space into a light-filled pavilion with panoramic views of the surrounding landscape.

The central island features a waterfall edge detail with integrated open shelving that adds visual lightness while providing practical storage for cookbooks and decorative objects. Streamlined black barstools with minimal profiles offer casual seating without disrupting sight lines. Professional-grade appliances are seamlessly integrated into the cabinetry, maintaining the kitchen's architectural purity.

Recessed lighting in the wood-paneled ceiling provides even illumination while a stainless steel hood becomes a sculptural focal point. The breakfast nook combines built-in seating with a small cantilevered table, creating an intimate dining space that extends the kitchen's functionality without compromising its clean aesthetic. Throughout, the design balances warmth and precision, creating a culinary space that's both technically sophisticated and welcoming.











Inside | EDITION #106















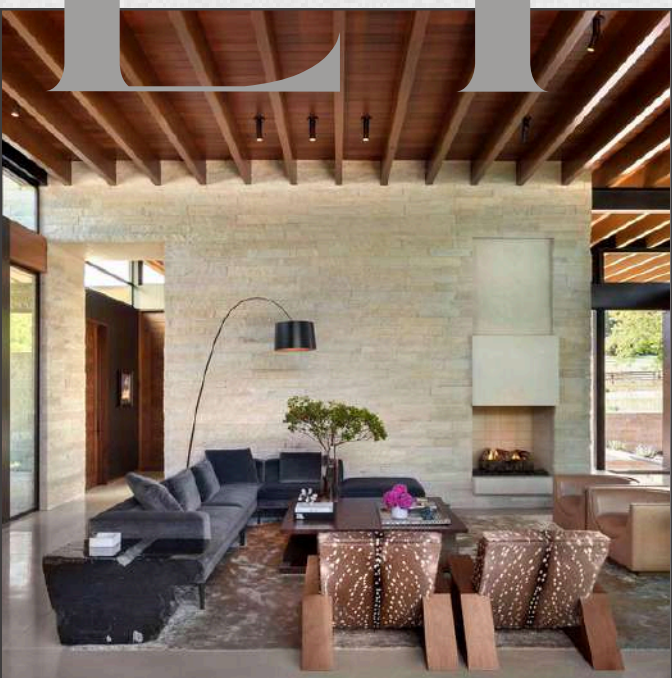


Inside

CATALOGUE

SHOP / BE INSPIRED / EDITION 106

LIVING



CUBO ARMCHAIR

Created by renowned Brazilian designer Jorge Zalszupin circa 1960

JORGE ZALSZUPIN



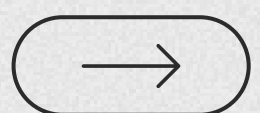
PIERRE COFFEE TABLE

Eclectic elegance featuring a wood top, Bronze base, Black Lacquer shelf and gloss finish.

BARLAS BAYLAR



LIVING STYLE



DINING



DEW DROPS PENDANT

Contemporary designed blown crystal and leather pendant light

BORIS KLIMEK



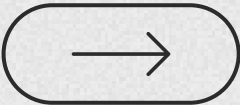
PLATNER ARMCHAIR

Original Warren Platner Armchair for Knoll International.

KNOLL



DINING STYLE





CAFÉ™ WALL MOUNT HOOD

36" Smart Designer Wall Mount Hood w/ Perimeter Venting

CAFÉ™ APPLIANCES



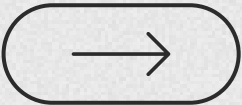
JULIUS BAR CHAIR

Polished metal & black leather upholstery modern art deco style counter stool

CARLYLE COLLECTIVE



KITCHEN STYLE



BED-ROOM



ALCOVA CANOPY BED

Modern design canopy bed in solid Oak or Sucupira, removable fabric or leather.

MAXALTO



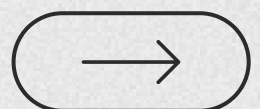
MINERVA SCONCE

White metal finish swing arm sconce with brushed gold accent

SHADES OF LIGHT



BEDROOM STYLE



BATH-ROOM



CIRCA VANITY

Floating vanity with red dolce mahogany veneer drawers and frame and ceramic top

OTTOLUX BATH



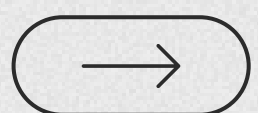
MILANO BENCH

Dark Brown Santos Rosewood bench with combination of metal blade legs

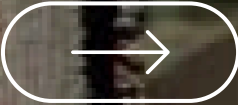
LORENZO DE GRANDIS



BATHROOM STYLE



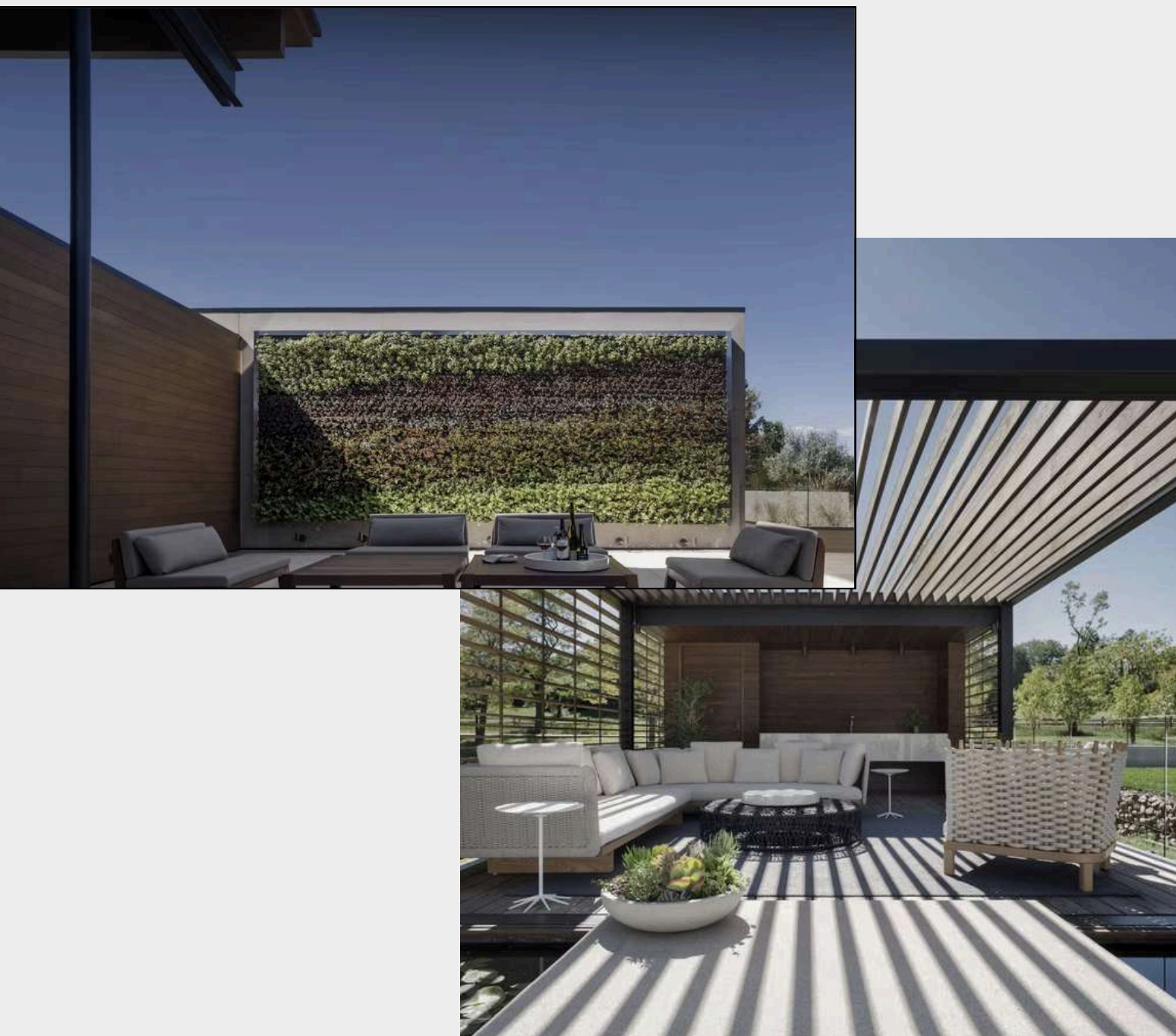
Rich in heritage and artistry, Boucherouite rugs bring a raw yet luxurious texture to the casual dining space, seamlessly linking the home's organic architecture to its outdoor surroundings. Handwoven by Berber artisans in Morocco, these one-of-a-kind rugs are crafted from repurposed textiles, transforming discarded fabrics into vibrant geometric compositions. Each rug tells a story—woven instinctively, layer by layer, without premeditated patterns, resulting in a dynamic, painterly effect. The irregularities in texture and color enhance their authenticity, making them as much an art piece as a functional element.



Loomed

INSIDE MODE

THEO *UTD* OOR EDIT



Serene atmospheres balancing structure with nature

SERENO

The outdoor spaces operate as natural extensions of the interior architecture, maintaining the home's dialogue between structural precision and natural beauty. Expansive concrete terraces flow seamlessly from interior spaces through disappearing glass walls, creating outdoor rooms defined by architectural framing rather than barriers. The central courtyard functions as an outdoor living room with minimalist furniture in weather-resistant materials—low-slung concrete and wood seating with subtle gray cushions that echo the building's palette. A dramatic living wall creates a vertical garden that introduces lush texture while maintaining architectural discipline. Throughout the landscape, linear plantings of native grasses create rhythmic patterns that complement the home's horizontal lines. The lighting strategy transforms the exterior after dark—vertical illuminated poles create a forest of light among meadow plantings, while subtle uplighting highlights architectural elements. The swimming pool area is defined by frameless glass barriers that maintain views while providing safety. Thoughtful material transitions—from polished concrete to carefully detailed steps and retaining walls—create a sense of procession through the landscape. Throughout, the design celebrates the surrounding natural context while maintaining the refined material palette and precise detailing that characterizes the architecture.











OUT-



AMAYA COFFEE TABLE

Woven abacca, steel and glass top
round coffee table

KENNETH COBONPUE

D

O

O

R



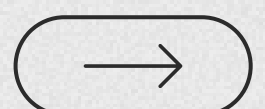
SABI SOFA

Sabi Outdoor Sofa is part of a series of outdoor furnishings, all of which rest on a stunning structure of natural or wengé-dyed sassafras wood

PAOLA LENTI



OUTDOOR STYLE





















SETTING THE STANDARD



LEPANG
LUXURY INTERIORS

@lepangluxuryinteriors



LUXE LIVING

coco∞n
THE DREAM SOFA

INSIDEINTERIORMAGAZINE.COM

WE ARE
REDEFINING
LUXURY LIVING
*through interiors and
architecture*

Design is a canvas, and the brush is in our hands. Every choice, every stroke shapes the direction, breathing life into spaces and products that tell a story. This is what inspires me—to create with intention, to craft environments that feel alive. For design communities worldwide, this is more than work; it's our shared narrative.

LEPANG FERGUSON





REDEFINING LUXURY LIVING

WWW.INSIDEINTERIORMAGAZINE.COM