

EDITION #104 FEBRUARY 2025

Inside

LIFESTYLE & INTERIORS



GNAPET LEPANG

Inside

EDITION #104



Inside Idaho's Sawtooth Range, *Stirrup House*—crafted by Olson Kundig, Lucas Design Associates, Elias Construction, and Ben Young—embodies kinetic mountain contemporary design. Steel-clad forms, board-formed concrete, and rift-cut oak harmonize with the rugged terrain. A Latin cross plan anchors rotating art installations, while Ben Young's native sagebrush landscaping blurs the line between wild topography and refined human intervention.

CAFE

DISTINCT BY DESIGN™



Café™ 48" Smart Dual-Fuel Commercial-Style Range with 6 Burners and Griddle

WWW.CAFEAPPLIANCES.COM



LE POÈME

A RESIDENCE WHERE ARCHITECTURE AND FLORA BREATHE AS ONE.

This is a place where nature isn’t framed but felt. Walls dissolve into panoramas of pines, and the line between shelter and landscape blurs like watercolor—reminiscent of Kyoto’s paper-screened teahouses, where simplicity amplifies the sublime. Every material—cold steel, warm oak, unyielding stone—feels alive, as if borrowed from the earth and polished just enough to honor its spirit.

For a wanderer who finds beauty and galleries in nature, Stirrup House is a compass. It doesn’t demand attention; it invites stillness. Here, art isn’t hung—it breathes, shifts, and mirrors the seasons outside. To inhabit it is to stand at the intersection of human ingenuity and nature’s raw hymn, a reminder that the most profound beauty is often where edges soften, and worlds merge.











TONAL NOIR



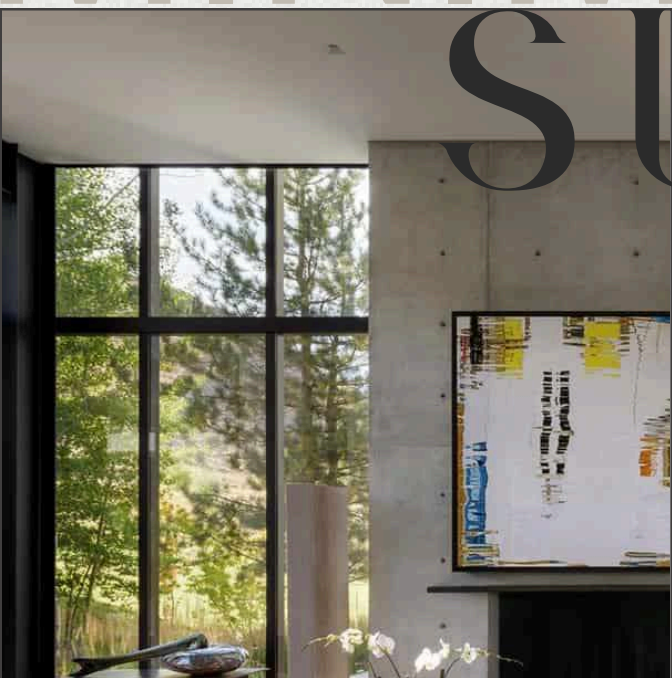
The material palette of Stirrup House is a fusion of raw and refined, where industrial elements meet natural warmth. Exposed steel, concrete, and glass form the architectural backbone, softened by the organic richness of wood and the understated elegance of stone. Dark metal accents introduce a moody sophistication, while warm oak and honed limestone infuse an inviting tactility. Deep, earthy tones complement the home’s connection to the mountainous surroundings, with subtle textural contrasts creating depth and intrigue. Every material—whether the smooth patina of bronze, the cool solidity of concrete, or the soft luster of natural wool—is curated for a dialogue between contemporary design and timeless comfort.

SCULPTED BY NATURE,
DEFINED BY DESIGN



A HOME THAT HOME PRIORITIZES GALLERY-LIKE SPACES WITH
NEUTRAL BACKGROUNDS AND THOUGHTFUL LIGHTING TO
SHOWCASE THE OWNERS' ART COLLECTION.

MINIMALISM WITH SUBSTANCE



Tucked into the serene landscape of Ketchum, Idaho, Stirrup House stands as an architectural masterpiece, a dialogue between art, nature, and contemporary mountain living. Designed by the renowned Olson Kundig, this 6,500-square-foot residence embodies the firm's signature interplay of rugged materiality and refined elegance, creating a home that is both grounded and ethereal. Positioned between Bald Mountain and Dollar Mountain, the residence is designed to frame the sweeping alpine vistas while simultaneously serving as a private gallery for an ever-evolving collection of contemporary art.

The project is a collaboration of industry visionaries, each contributing their mastery to the residence's impeccable execution. Olson Kundig, led by design principal Tom Kundig, FAIA, RIBA, has long been synonymous with bold, site-responsive architecture that bridges the built and natural environments. Known for an uncompromising approach to craftsmanship and detail, the firm's work is deeply rooted in a material palette that honors the integrity of steel, concrete, and wood. Interior refinement comes courtesy of Lucas Design Associates, a firm distinguished by its ability to create interiors that are as sophisticated as they are inviting. Elias Construction, a name synonymous with precision and artistry, brings the design to life with masterful execution, while landscape designer Ben Young softens the structure's industrial edge with an organic approach to the surrounding terrain, seamlessly blending the built environment into the raw beauty of Idaho's mountain terrain.

The architecture is a study in contrast and balance, where robust steel and wood forms bifurcate, creating a Latin cross layout that delineates private and communal spaces with effortless clarity. The main volume encompasses an open-concept kitchen, dining, and living area, while a striking steel-and-glass entry vestibule marks the transition into the secondary wing, home to a glass-box master suite. Expansive walls of glazing capture the shifting moods of the landscape, framing art both within the house and in the outdoors, where sculptures punctuate the forested surroundings.

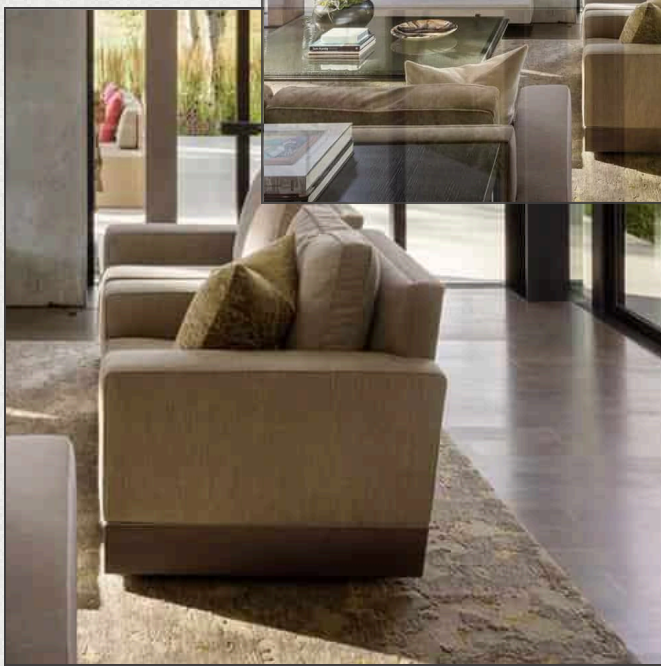
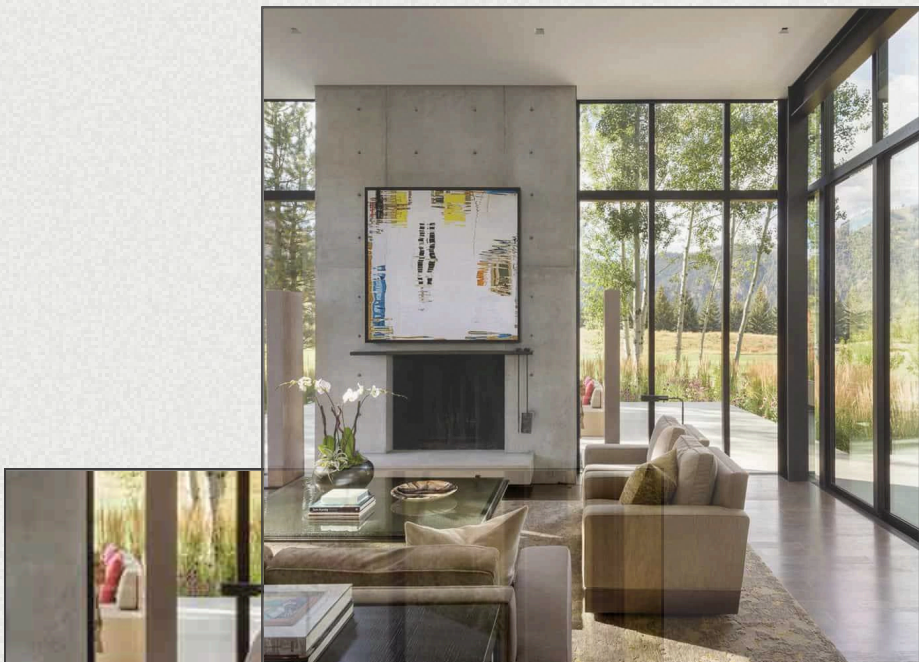
Upon entry, a soaring double-height foyer introduces the home's dual emphasis on art and nature. An arresting abstract painting by Lawrence Fodor, *Rain Forest*, serves as an anchor, its vivid expressionism setting the tone for a space that is as much a gallery as it is a residence. The material language of the interiors echoes the architecture's raw yet refined sensibility. Exposed steel, panel-formed concrete, and warm wood form a backdrop of quiet restraint, allowing the art collection to take center stage while simultaneously establishing a deep connection to the natural world beyond.

The living space is a study in understated grandeur, a monolithic concrete fireplace draws attention, with its presence extending beyond the interiors to warm the exterior deck. A carefully curated selection of furnishings punctuates the room, each piece chosen not only for its form but for its ability to engage in a dialogue with the architecture. The dining area, bathed in natural light, is an intimate yet expansive setting, offering views of the snow-dusted peaks in winter and the verdant landscape in summer.

In the master suite, glass walls dissolve the boundaries between shelter and sky, immersing the space in an ever-changing panorama of light and shadow. The bath is an exercise in restraint, where natural stone, brushed brass fixtures, and handcrafted millwork create a sanctuary of tactile indulgence. Below, two guest suites offer a cocoon-like retreat, their subdued palettes and plush textures providing a warm counterpoint to the rugged exterior. Above, two offices serve as contemplative spaces, designed with the same reverence for materiality and proportion that defines the rest of the home.

The home is designed to respond dynamically to the shifting Idaho seasons. In winter, when the landscape is blanketed in snow, the interiors exude warmth, the materiality deepened by the glow of firelight and the muted hues of wool and leather. In summer, expansive doors open to invite the crisp mountain air, blurring the line between inside and out. The outdoor spaces, curated by Ben Young, extend the home's design ethos into the landscape. A refined yet naturalistic approach integrates stone pathways, native plantings, and sculptural elements, reinforcing the home's inherent connection to its surroundings.

Every element of Stirrup House is carefully considered, from the architectural gestures that shape the form to the furnishings and finishes that lend it a soul. It is a home that honors its place, its occupants, and the art it so elegantly showcases—a rare convergence of precision and poetry, where architecture, interior design, and nature exist in perfect harmony.







Inside | EDITION #104



Inside | EDITION #104







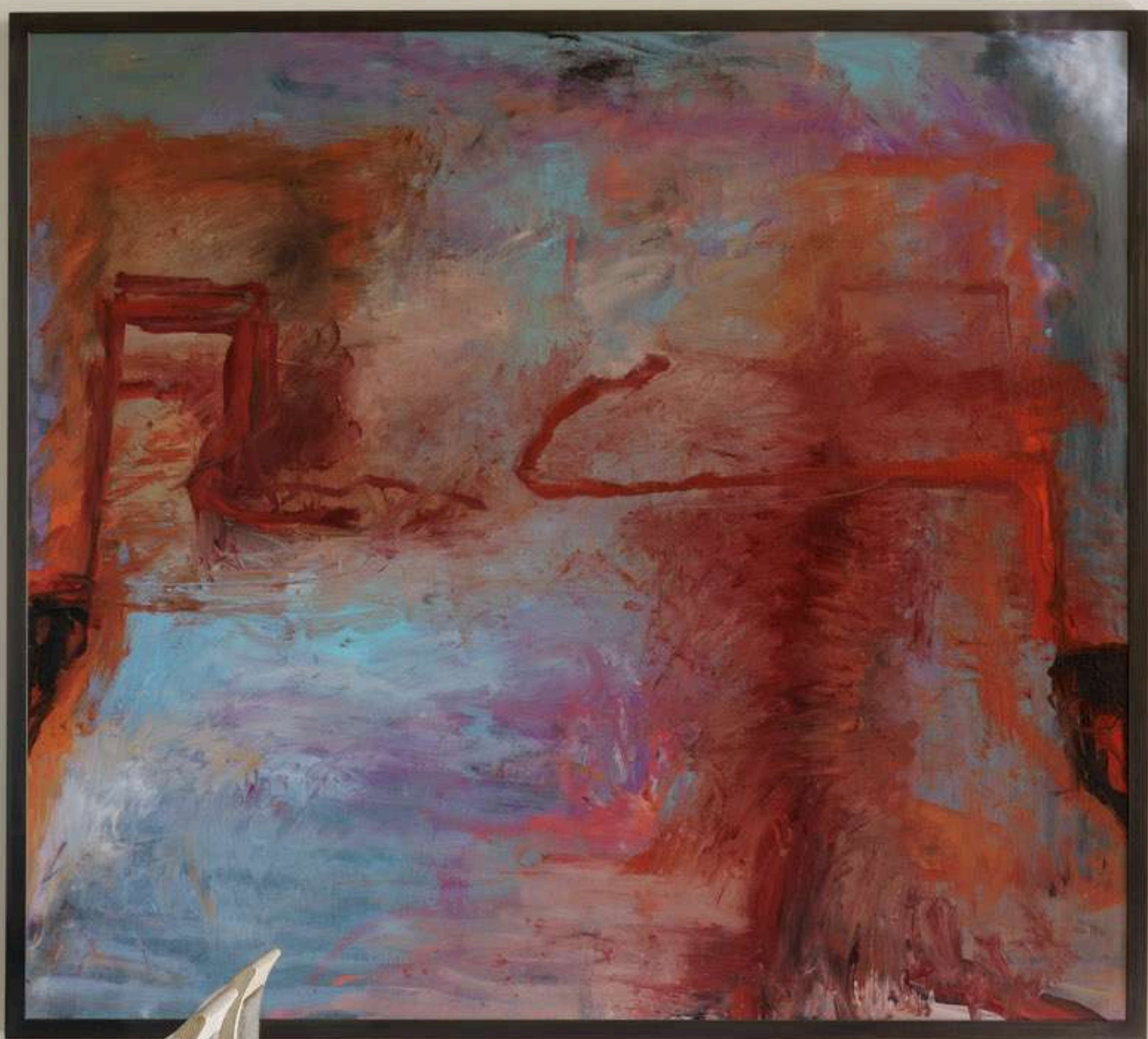








Inside | EDITION #104



Inside | EDITION #104







THE KITCHEN EDIT

The kitchen is a striking balance of functionality and artistry, with a sleek yet grounded aesthetic. A monolithic stone island in honed basalt commands attention, its surface flowing seamlessly into the custom oak cabinetry. The interplay of dark-stained wood and blackened steel accents enhances the kitchen's refined depth, while an oversized picture window floods the space with natural light. State-of-the-art appliances—Sub-Zero refrigeration, a Wolf range, and Miele integrated systems—elevate performance, concealed within the elegant cabinetry for a seamless look. Suspended brass pendants add warmth, their glow reflecting off polished quartzite countertops. The open shelving, crafted from rich walnut, displays artisanal ceramics, while matte black hardware lends a contemporary edge. Grounded in natural stone flooring, the space transitions effortlessly into the adjacent dining area, reinforcing the home's fluid, sculptural elegance with every meticulously curated detail.



Architectural precision meets the organic beauty of stone. **ARCOSTONE**











Inside | EDITION #104















Inside | EDITION #104



Inside

CATALOGUE

SHOP/BE INSPIRED/EDITION 104

LIVING

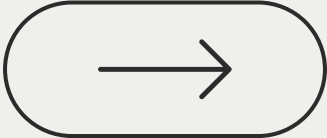
CHIEFTAIN LOUNGE CHAIR

Scandi style armchair Gently padded and wrapped in leather and mahogany wood

FINN JUHL



LIVING STYLE



Contemporary Abstract Painting by William Conger



CENTRE TABLE

The minimalist aesthetic of architect John Pawson on a sleek rectangular glass supported by brass feet

PAWSON

LEATHER LOUNGER

Covered with a black fabric with a nubby structure and is characterized by soft padding

KIMITA LUXE

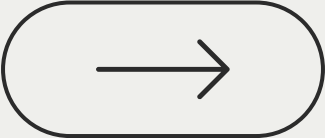


LOUNGE



Horse sculpted Neolith (marble stone powder) with gold patina by Fader

DINING STYLE



HARUYO COFFEE TABLE

Combination of sturdy marble and iron in a contemporary style

ORREN ELLIS

DINING

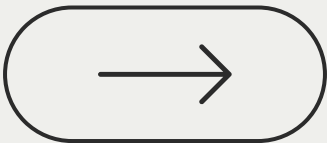
SERRA DINING TABLE

Oak tabletop dining table with brass foil finished hardwood curved panel base

ÉPOQUE



DINING STYLE



Murano glass Italian art glass in blue and sunburst by Riva Italia



ELIAN DINING CHAIR

Elegant oak dining chair with cream fabric seating with an elegant slight outward curve backrest

ELENA HENDRICK

KITCHEN

CAFÉ™ 36" COOKTOP

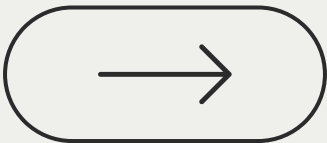
Commercial-Style Gas Rangetop with 6 Burners

CAFÉ™ APPLIANCES



2-Hole Single-Handle Kitchen Faucet 2-Spray Pull-Down by Axor

KITCHEN STYLE



MURAL STOOL

Hardwood frame minimalist modern framed counter stool with leather seating and backrest and metal accents on the sides

CRESTLINE

ADORE LOW SLUNG BED

Low slung headboard bed which is fully upholstered in high quality wool fabric

ELEMENTS DESIGN

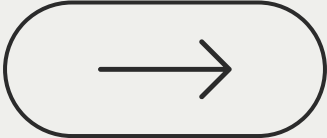


BED-

R

BEDROOM STYLE

Raw silk scatter cushions in various colors by Muted Luxury



O

O



MARLOW NIGHTSTAND

Wooden structure long frame headboard with fully upholstered base designer bed

TAO LIFESTYLE

M

BATHROOM

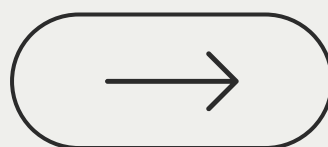
EVOLUTION BATH

Polished ceramic oval bathtub with a soft delicate wave design

AZZURRA CERAMICA



BATHROOM STYLE



Linear-cut seeded crystal adds understated glamour when it fills with light sourced from high-performance LEDs, by Amore Lighting

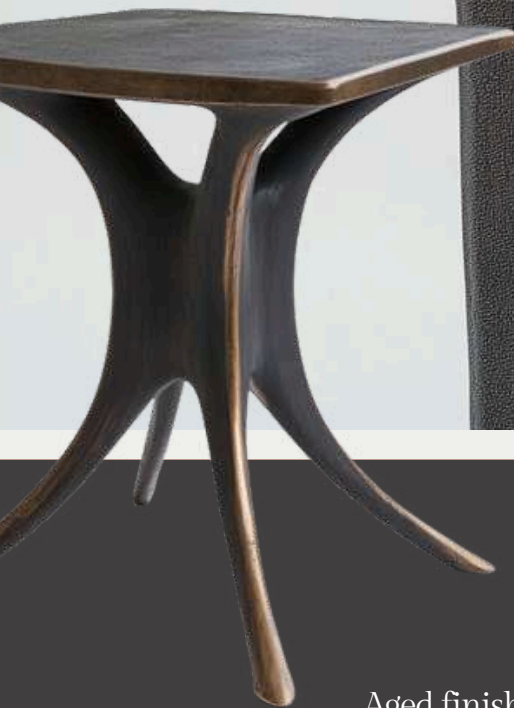


INDIRA VANITY

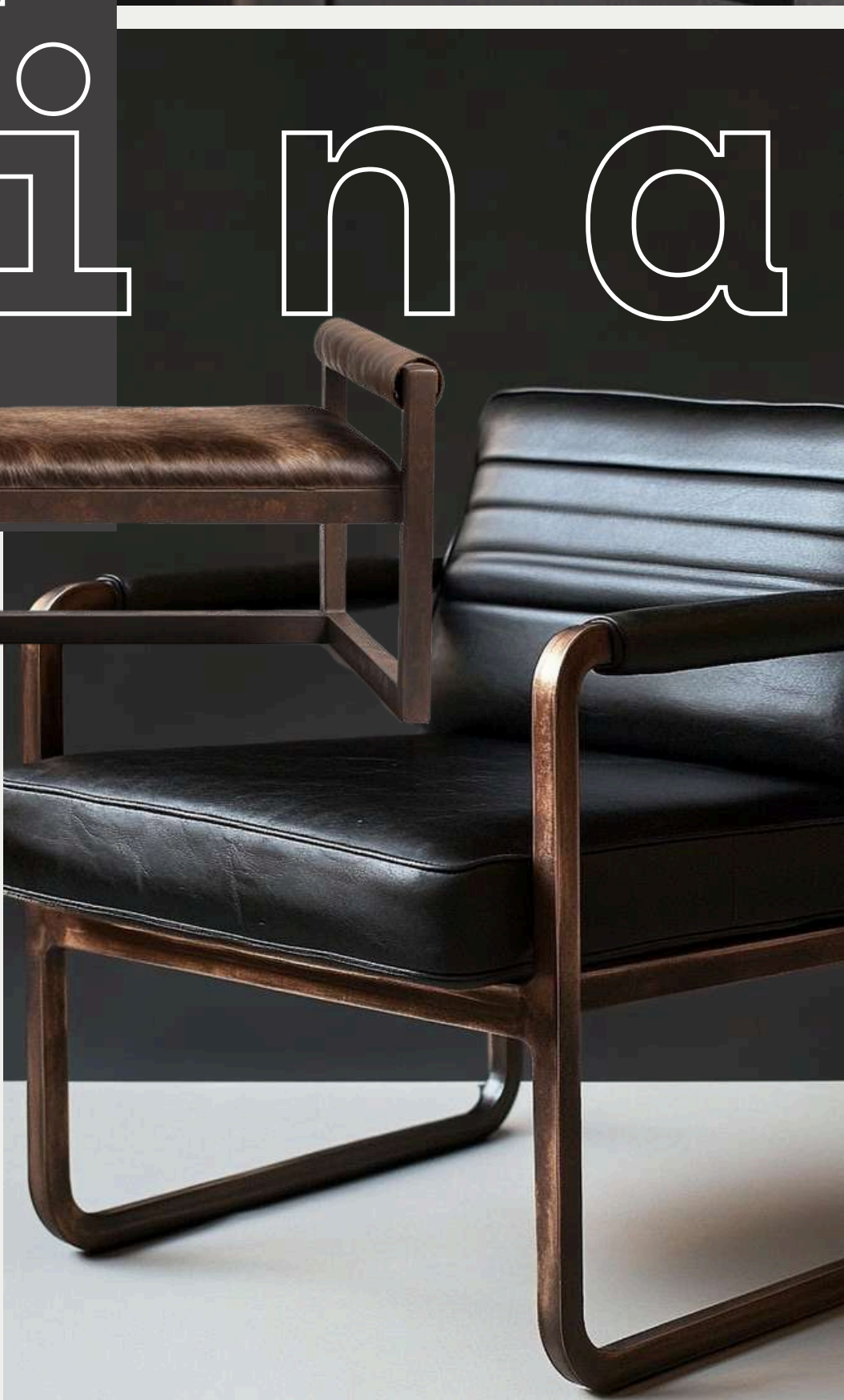
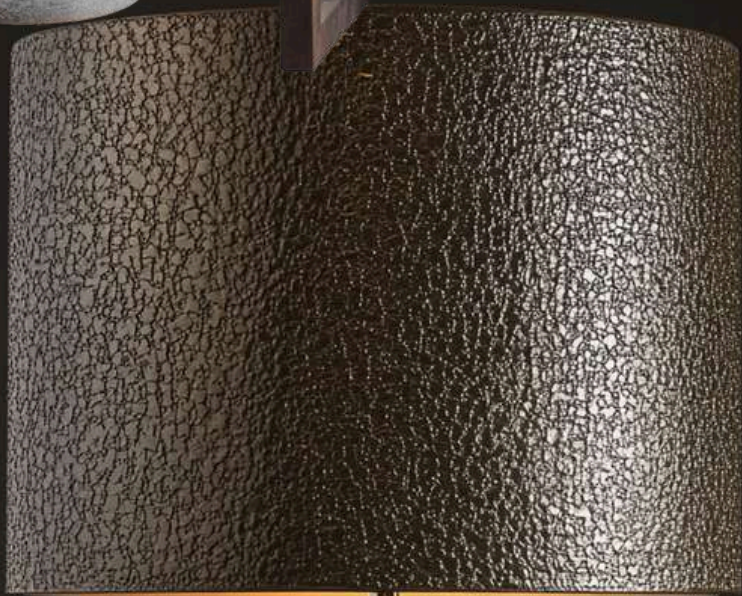
Dark Emperador marble vanity top encased in a walnut minimalist luxe frame with 6 drawers

CISELBOIS

/INSIDE MODE



Aged finishes and rich textures define the elegance of patina, where design embraces time's artistry. The Ardente Side Table by Nina Maletz, with its bronzed edge detailing, offers sculptural refinement. The Verron Armchair by Arturo Studio wrapped in hand-aged leather, embodies quiet luxury. The Nocturne Console by Atelier Blu, fuses oxidized metal with dark-stained wood, balancing modernity with heirloom appeal. From burnished surfaces to deepened metallic hues, patinated finishes celebrate craftsmanship and depth. The Patina Collection reinterprets history through design, where every mark, every subtle imperfection, becomes a testament to character, authenticity, and enduring sophistication.



patina

THE OUTDOOR EDIT

The outdoor spaces extend the home's refined aesthetic into the natural landscape, embracing a seamless indoor-outdoor flow. Expansive terraces in honed limestone provide the perfect canvas for relaxation, their clean lines softened by lush, native plantings. A steel pergola with integrated lighting casts shifting shadows, enhancing the architectural drama while offering respite from the Idaho sun. The firepit area, encircled by deep-seated lounge chairs in weathered teak, becomes a natural gathering space, framed by uninterrupted mountain views. The infinity-edge pool reflects the vast sky, its dark stone lining echoing the home's material palette. A built-in outdoor kitchen, featuring a Wolf grill and polished concrete countertops, is primed for effortless entertaining. Every element—from the hand-troweled stucco walls to the aged bronze fixtures—echoes the home's commitment to luxury minimalism, where contemporary design and the rugged beauty of Ketchum's landscape exist in perfect harmony.



A stronghold of modernity in a rugged setting.

BASTIONIS













Inside | EDITION #104

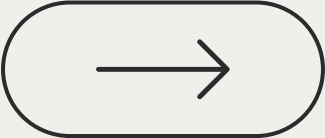
LP CHAIR

Matte touch outdoor minimalist syle chair

LUCIDIPEVERE



OUTDOOR STYLE



Lynx Professional Grill Series



OLIVER DINING TABLE

Made with diamond-hard Italian-designed porcelain tops with flat black legs

MIKAZA











Inside | EDITION #104



A combination a sleek black wooden frame with neatly inlaid ruby-red glass blocks arranged in a grid pattern. Accented with brass handles, the minimalist legs complete this striking contemporary statement piece.

SETTING

THE

STANDARD

LEPANG
LUXURY INTERIORS

@lepangluxuryinteriors



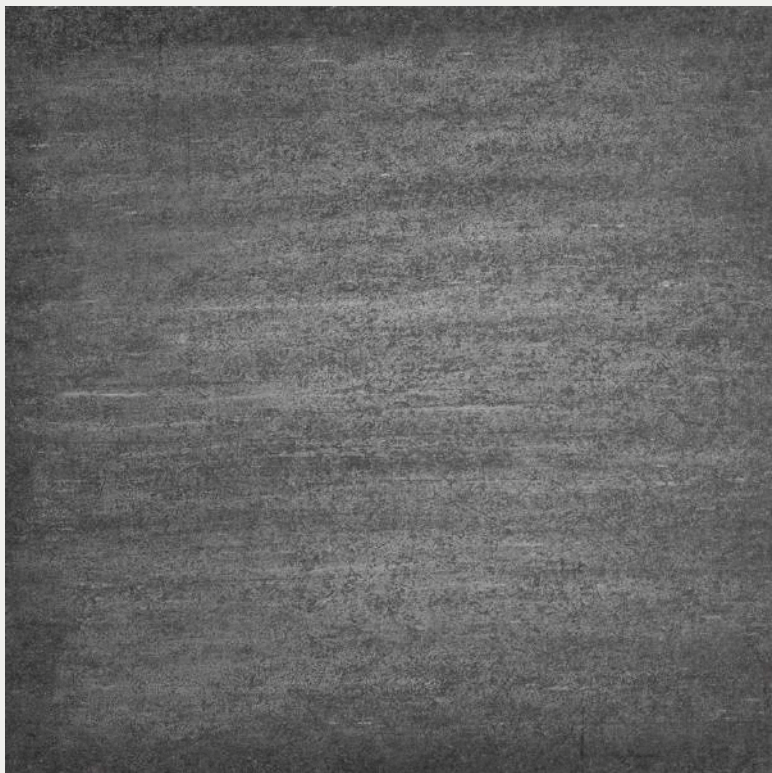
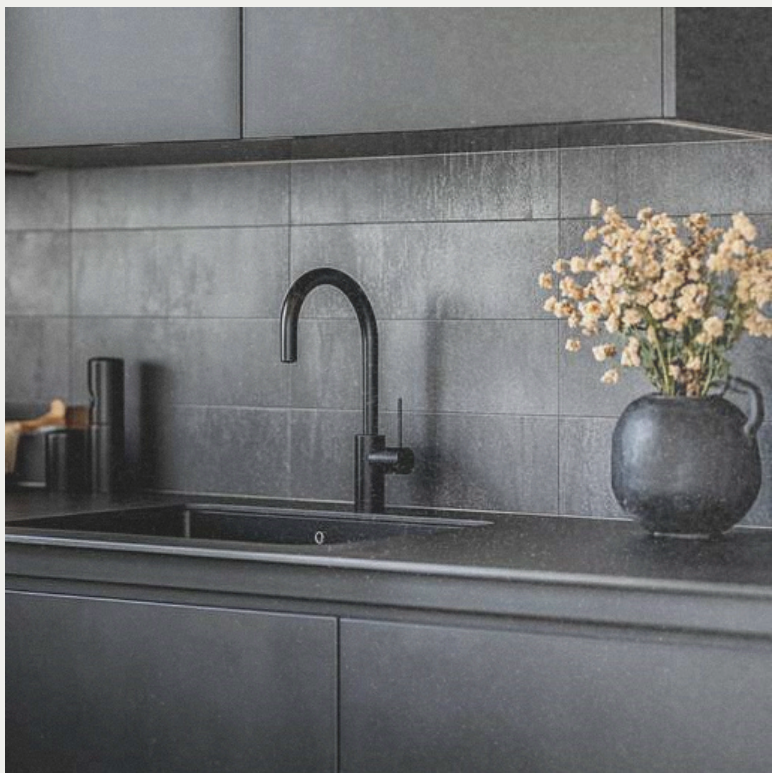
LUXE

LIVING

COCOON

THE DREAM SOFA

@lepangluxuryinteriors



Design is a canvas, and the brush is in our hands. Every choice, every stroke shapes the direction, breathing life into spaces and products that tell a story. This is what inspires me—to create with intention, to craft environments that feel alive. For design communities worldwide, this is more than work; it’s our shared narrative.

LEPANG FERGUSON

EDITION 104

@INSIDEINTERIORMAG



REDEFINING LUXURY LIVING

WWW.INSIDEINTERIORSMAGAZINE.COM